

- Can we convey the effect of a freehand perspective but digitally?



Powering your graphic capability

- A lot of amazing graphic software is available today. However, freehand sketching continues to give that unique and artistic feeling to designs and graphics

Can we find a way to use the advantages of both to empower our graphics?

Mixed Media Painting

Amal Wasfi



Combining freehand and digital is the future

- Digital technology undoubtedly has provided incredible tools

“The ‘software’ are quick in picking up our needs and simplifying the process.”

- It makes sense to use them especially if you are a **‘digital native’** (technology is part of you) and your freehand skills are not as good

Advantages:

1. It offers certain qualities that each one by itself hardly can offer
2. We can use parts of what we have done before so we save time and effort
3. It offers editing and 'undo' flexibility that hand-drawn drawing can't offer. Especially the process of design is built on editing to elaborate and improve

Advantages

How to combine freehand with digital painting?

In order to mix both (human and digital rendering), it's useful to explore new technique of:

'personalizing the digital drawings'



What is the art of Mixed Media?



The art of combining multiple media for effective communication

It is a digital painting not a photograph
It is a combination of three mediums



Digital painting
combined with
modified photos of
different objects

Personalizing Digital Painting

How?

- Use the software pens and brushes (such as Photo Shop, Illustrator, ipad Procreate pens and brushes)
- Render every surface separately by customizing the setting choices (colours, tones, shades, edges)
- You can trace digital lines and alter them
- You can use the mouse to draw additional lines or wave lines
- You can combine different mediums and make them look as one medium. Such as we can use finish materials from photos after altering them to have hand effect.

Transforming digital drawing to have the characters of freehand sketching and then blend it with freehand painting







Draw one window (manually or digitally) and then copy them to create an elevation

The result can look like a freehand painting



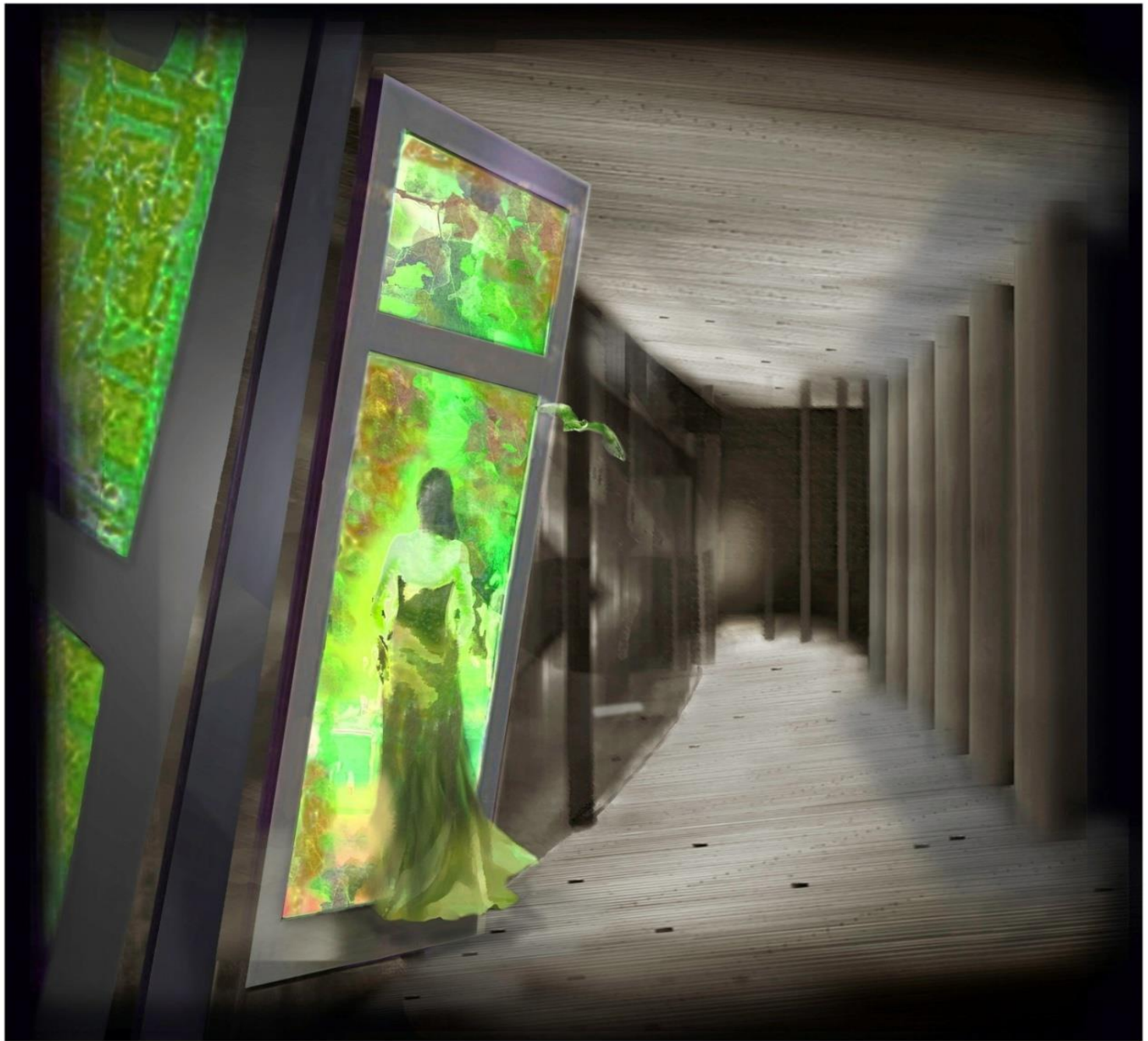


A combination of digital and free hand work

Sometimes, the contrast between the media is desirable to create a certain effect



I can do more when using digital and hand painting



Green Portal - Mixed Media

Amal Wasfi

The effective transition between digital media and acrylic supports the idea of representing different worlds, the real uncolored world and the dreamy green world

I can do
much
more by
using
digital
painting
than just
freehand







My Master's degree work



Humanizing the Guildford Mall Area



UBC, School of Architecture and Landscape Architecture
MUD Program, Class 2014-2015



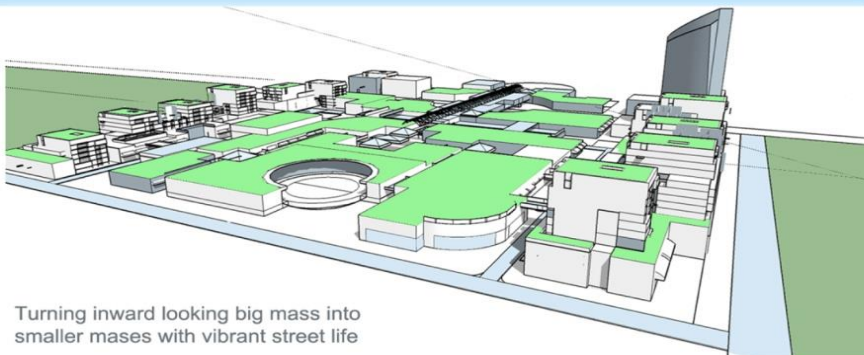
The Mall Area:

The main Goal:

Turning the mall into a small village with high street experience

Strategies:

- Splitting the big one mass into smaller ones.
- Shaping the buildings to define paths and plazas
- Opening up the indoor mall to the outdoors
- Replacing the open parking by underground parking



Turning inward looking big mass into smaller masses with vibrant street life



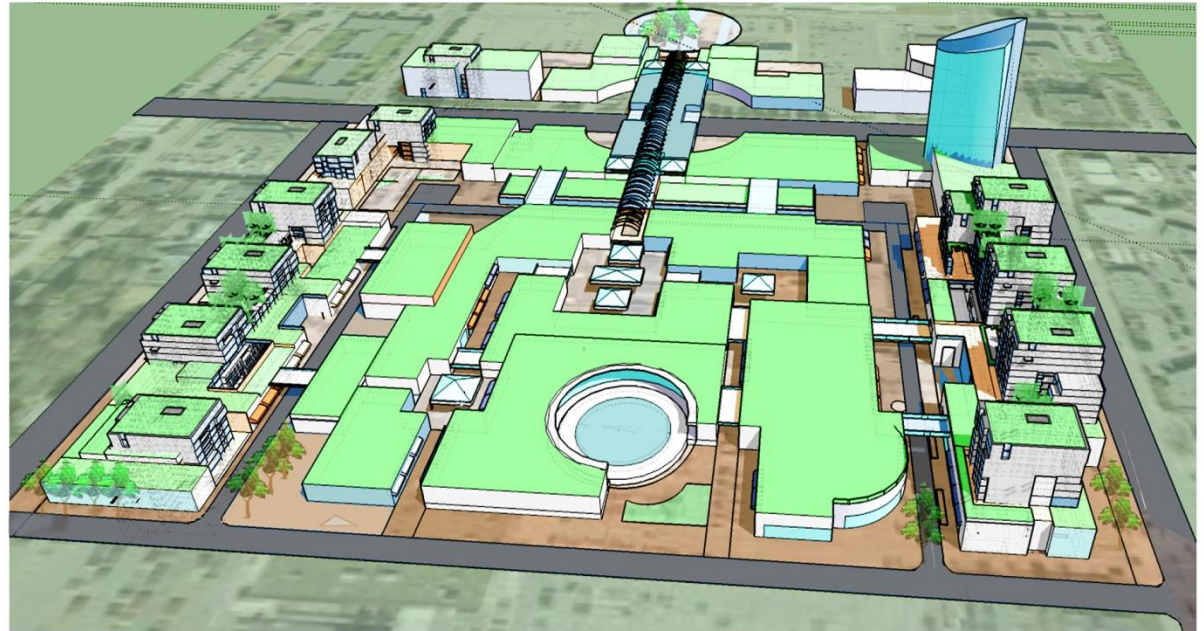
Walkways and the Automobiles Paths:

- The walkway paths:

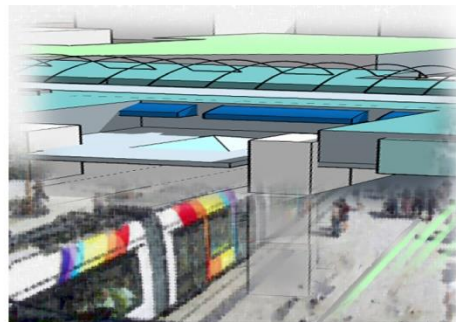
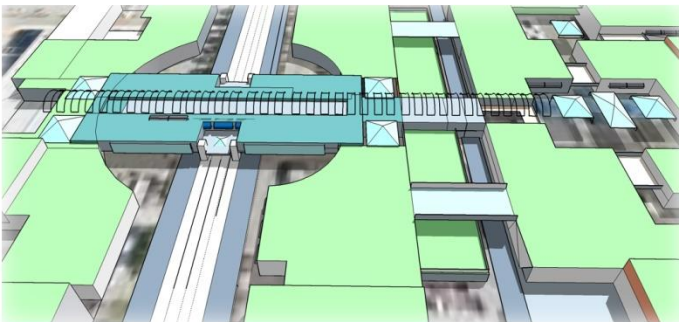
A strong access will draw the people from the LRT stop point to a plaza in the middle of the village, and this turn into 2 paths to the left and the right.

-The Automobiles roots:

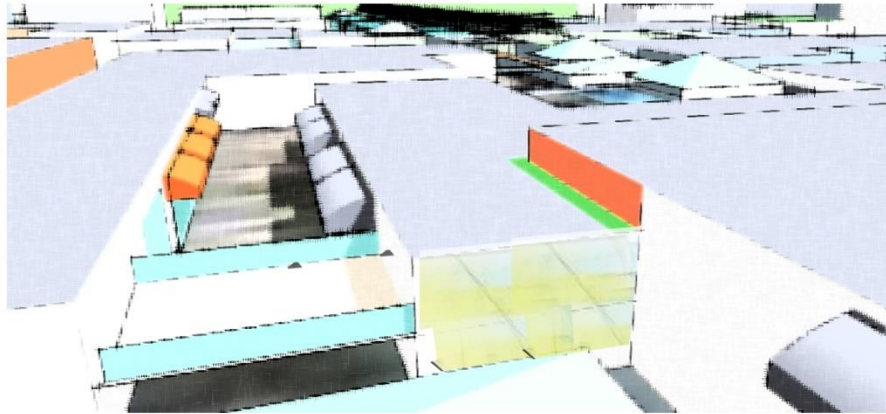
The concept limiting the car movement inside the village by a "U" circle run between the retail and the mixed use buildings in a closed loop of 2 lanes.



The automobiles will use a U loop



The LRT stop will be in the middle of the village frontage



How to create a vibrant street life:

- Creating defined paths and plazas.
- Blending the edges between inside/ outside.
- Creating bridges connect buildings.
- Providing Off and on roof shelters

Spaces made to be “Places”





Place Making:

In the village's plazas and paths, we provide the advantages of the outdoors, (fresh air, friendly urban environment), and the advantages of the indoor places, (stairs /escalators, canopies/ rain shelters, benches, outside showcase, attractive lighting, artwork, fountains).



Outside spaces have the feel of the inside places







Photography of Roof Garden

Guildford Mall Project

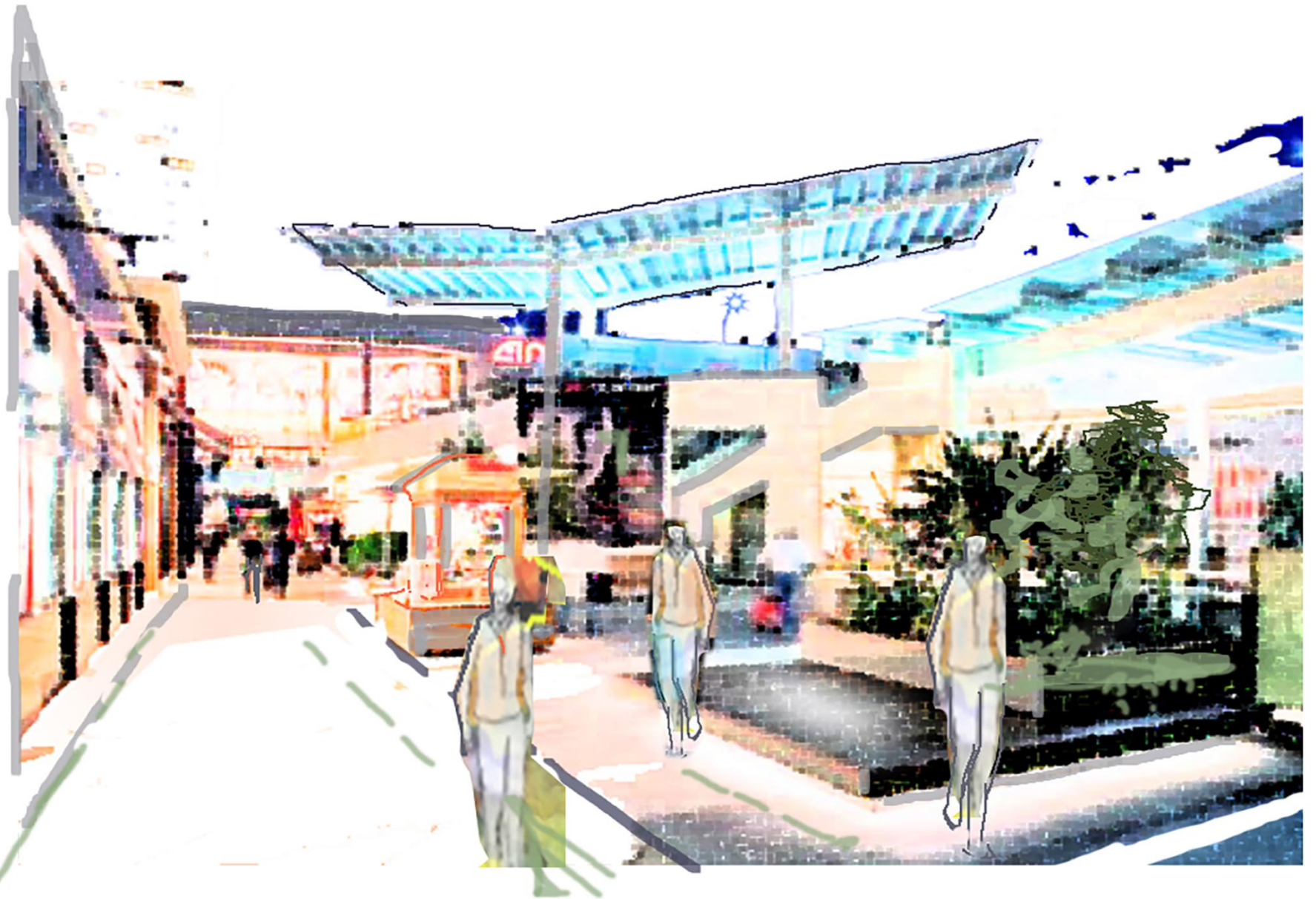
The collage of photography with 3D image



3D Sketch Up image of Guildford Mall

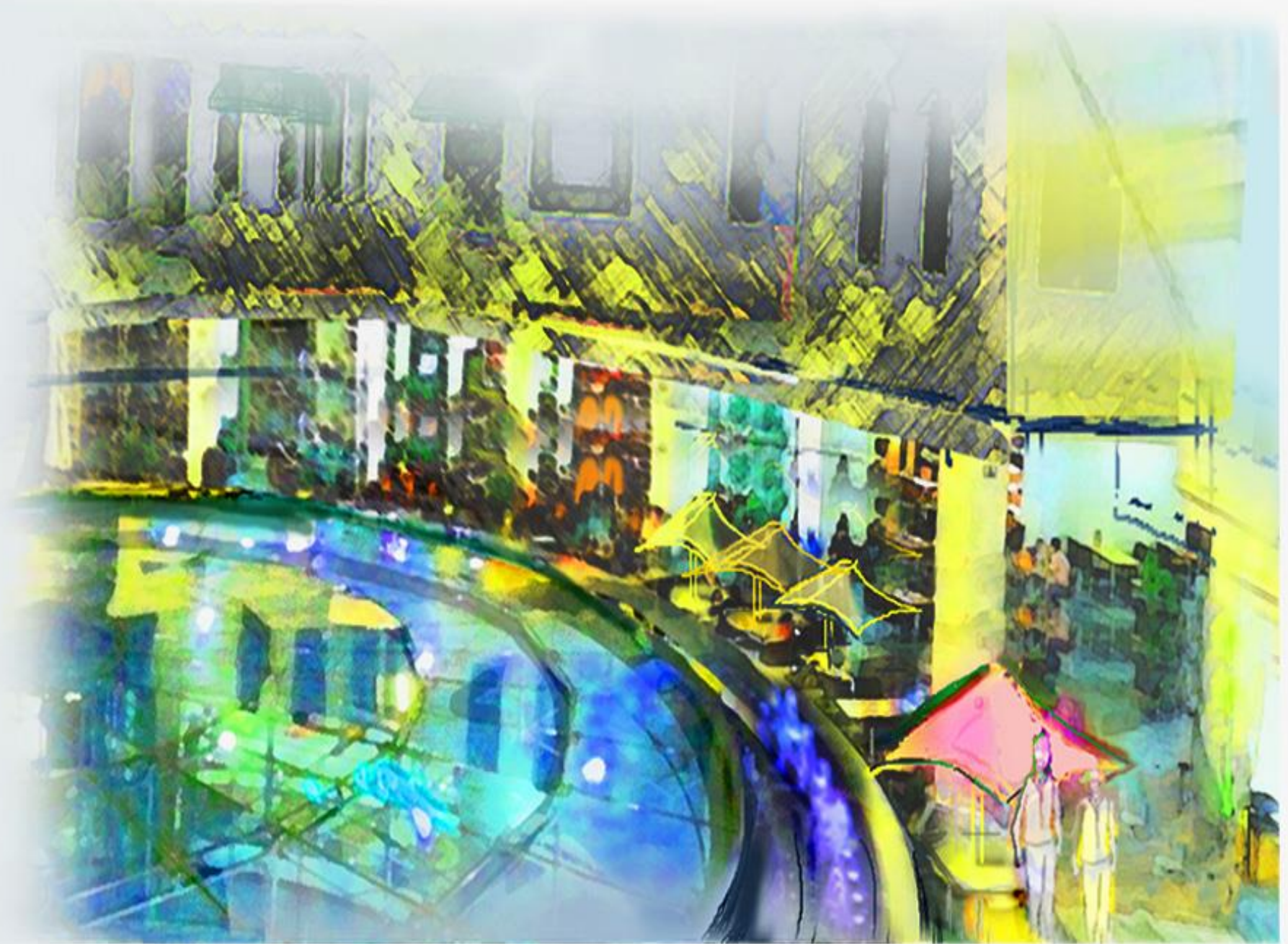
Collage of Photography and 3D Sketch Up





Outside spaces have the feel of the inside places









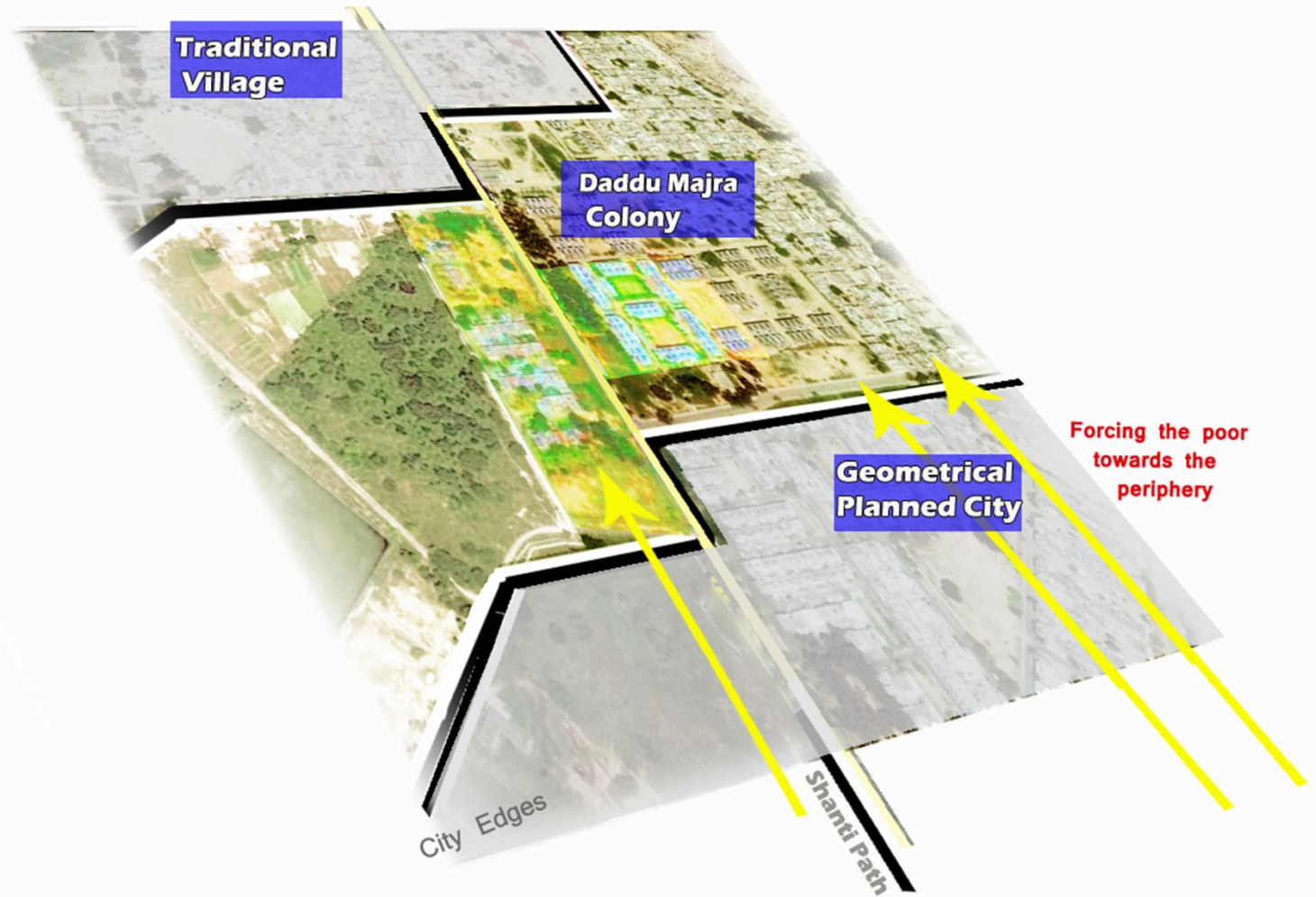
A combination of digital and free hand work

The photos are modified to give freehand effect and that is combined with freehand drawn objects

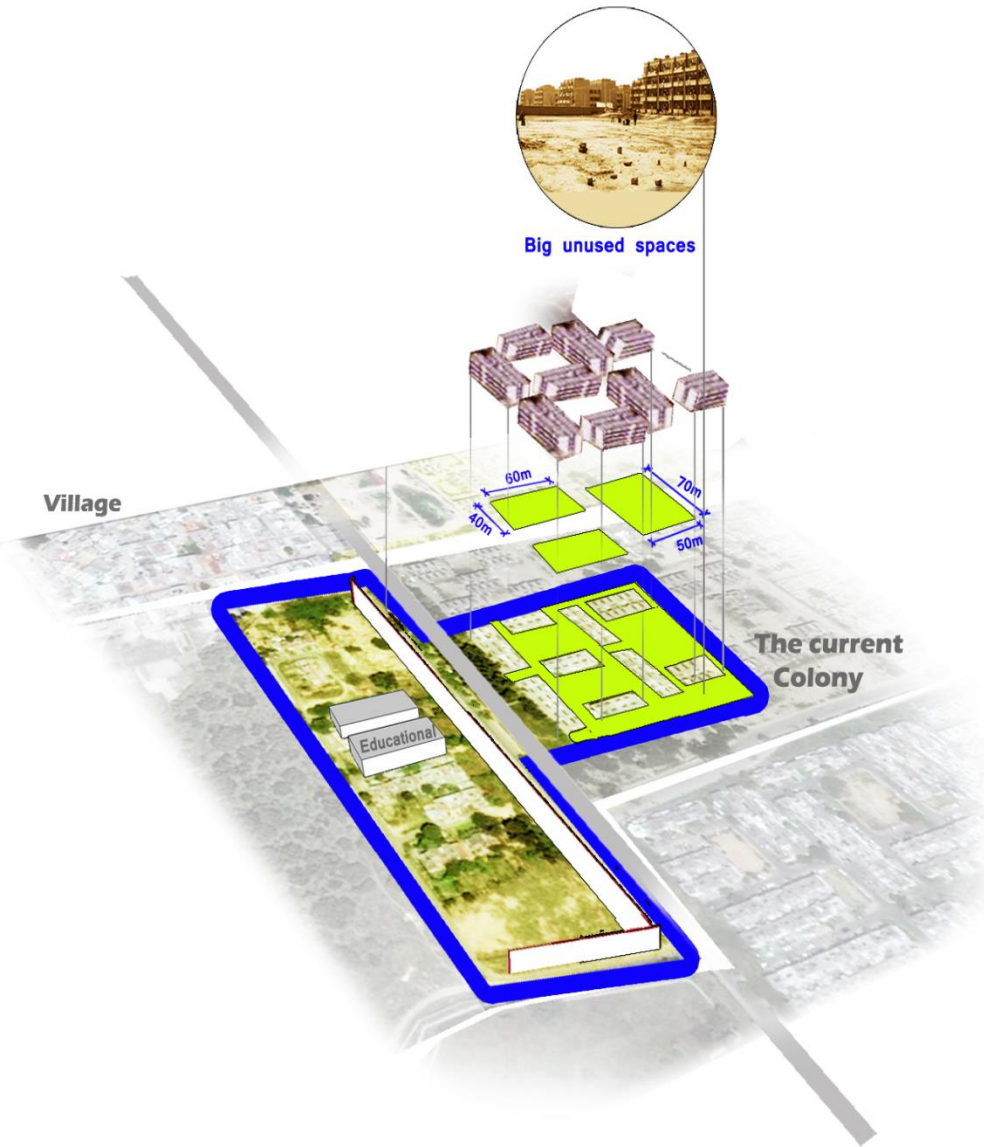
Daddu Majra Colony- City of Chandigarh

Design Solution

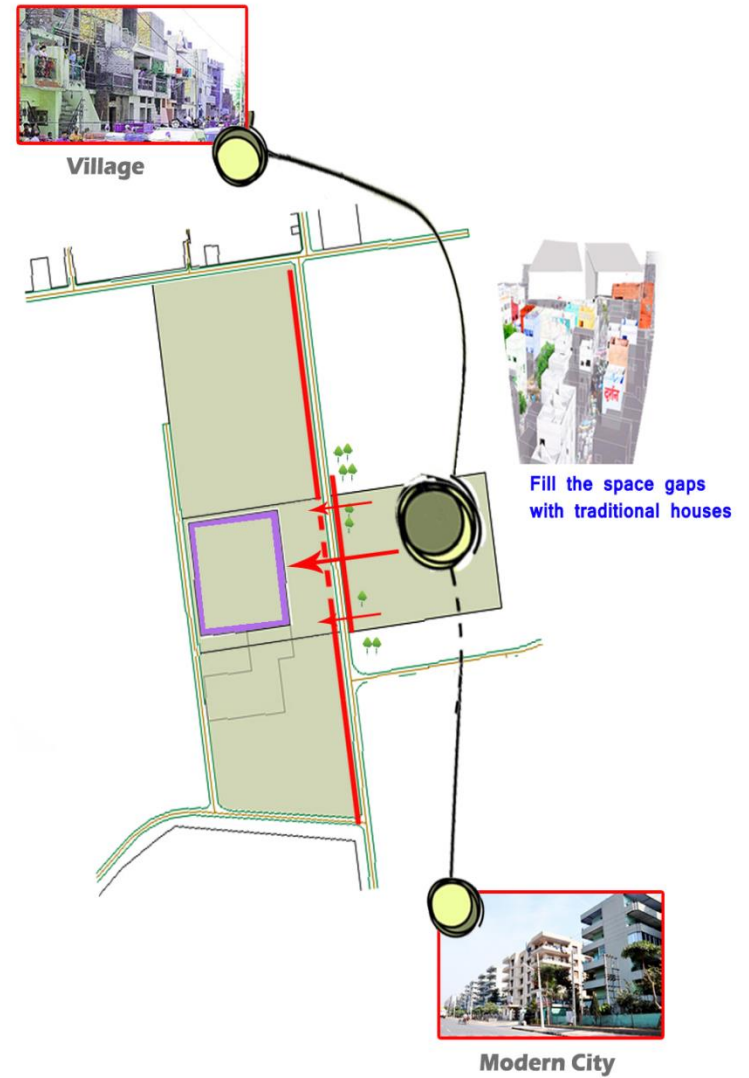
The Colony Site is a Transitional Joint



Challenges and Opportunities in the Colony Area



Big scale buildings and spaces



Combined of Modernity and inherited architecture

Why Slum Dwellers Refuse to live in the Modern Rehabilitation Colonies?

The poor complains in the social media:



Overcrowding Units



No Air Flow (Very Hot)



Less Job Opportunities in the Periphery

1. PERSONALITY
2. PERSONALITY
personality profile

1. KNOWLEDGE ACQUISITION
2. ACQUISITION

skills a day (visual structure)

map exercise

show/draw/use

5 ways →

process based visual exploration

Justification/found connection
1. iterative
2. based on

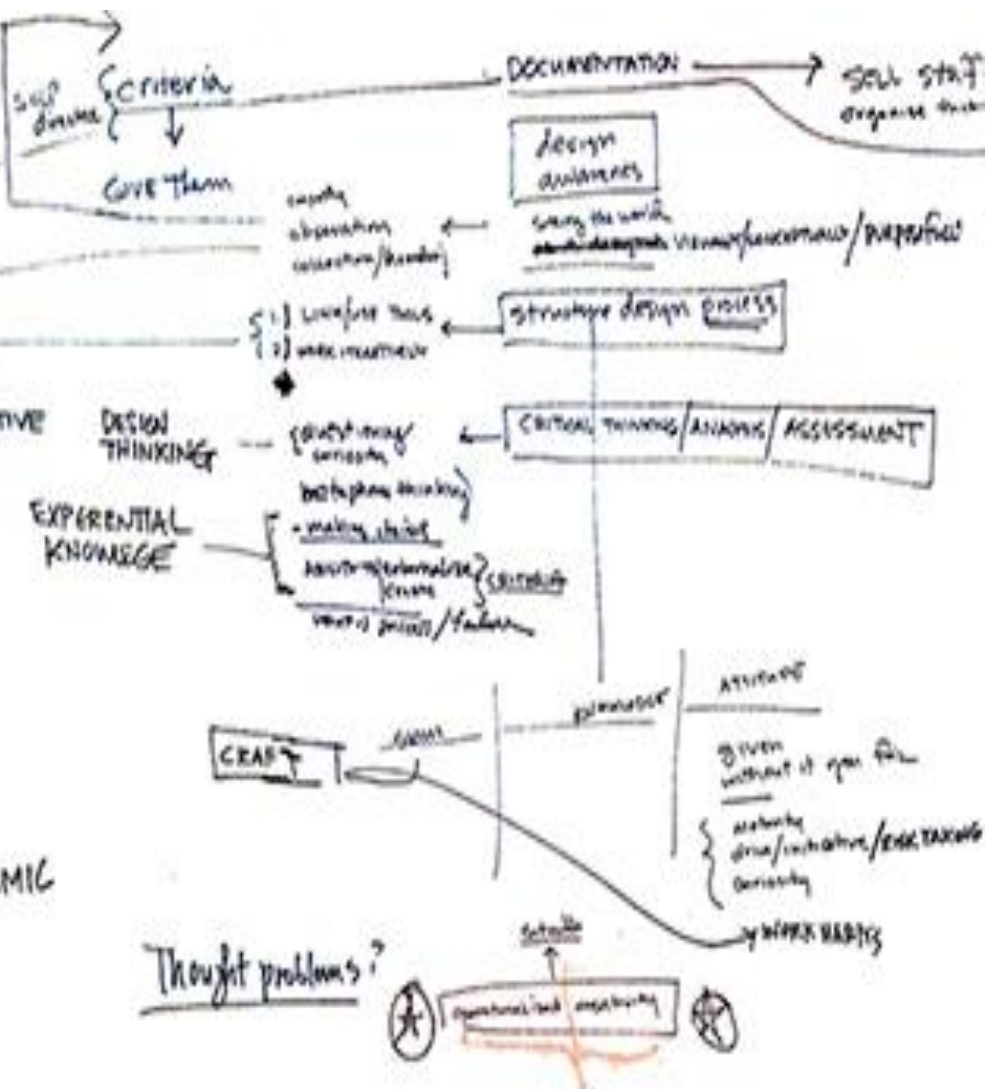
Restaurant (design problem)

6 HATS - critical problem

Ice to eskimo

TERMINOLOGY

- ITERATION/ITERATIVE
- SEMANTICS
- EMPATHY
- PERSONAL ASSESSMENT
- SYNTHESIS
- PROCESS ANALYSIS
- RESEARCH
- METAPHOR
- SYSTEMS/SYSTEMIC
- TAXONOMY

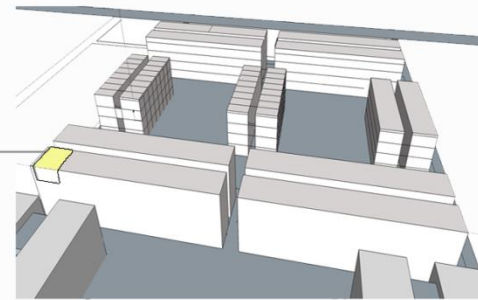


Overcrowding Units in Daddu Majra Colony



Existing Situation

Mental and health problems



High people density with low building density



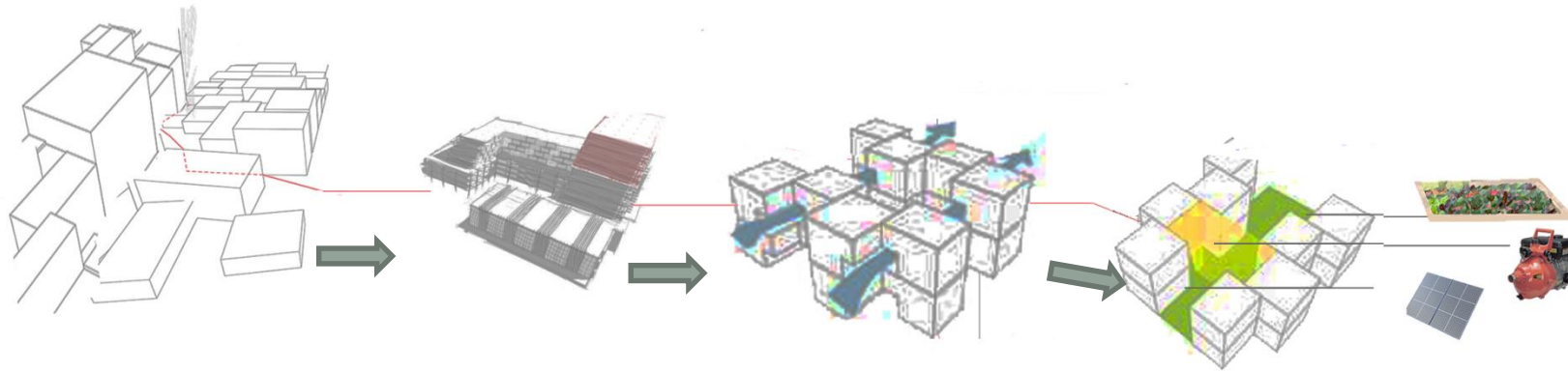
Proposed Solution

Add building Density to reduce people density

Lower the people density



Increase Building Density to Reduce People Density



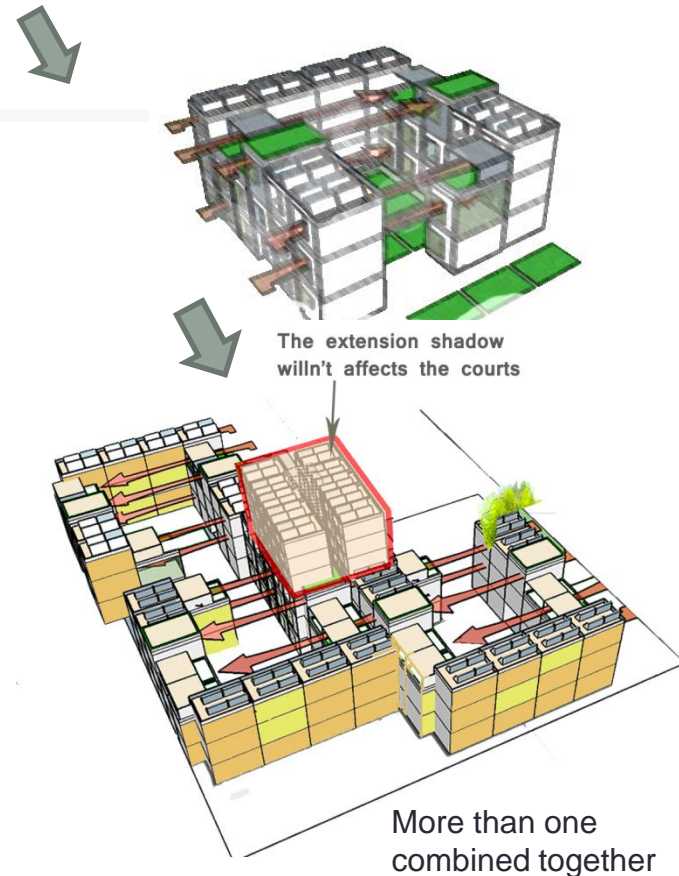
Density with Variety

Can Expand

Air Penetration

Self Sustained

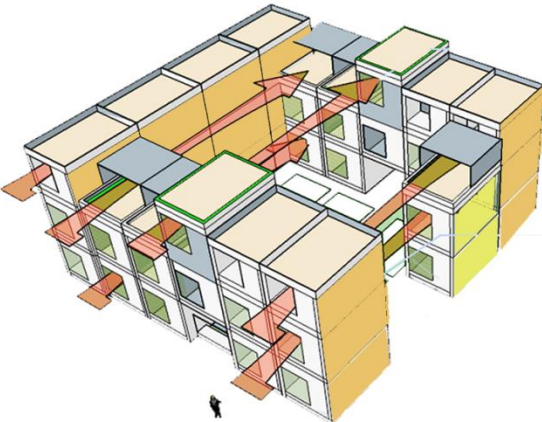
The process of shaping buildings to meet goals



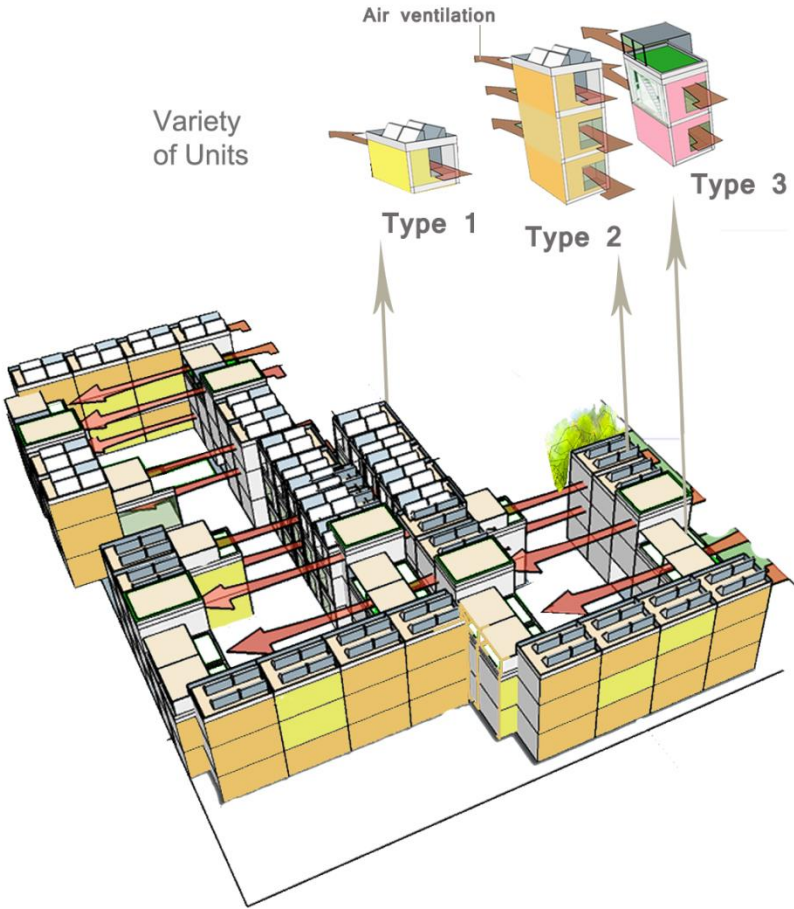
The extension shadow willn't affects the courts

More than one combined together

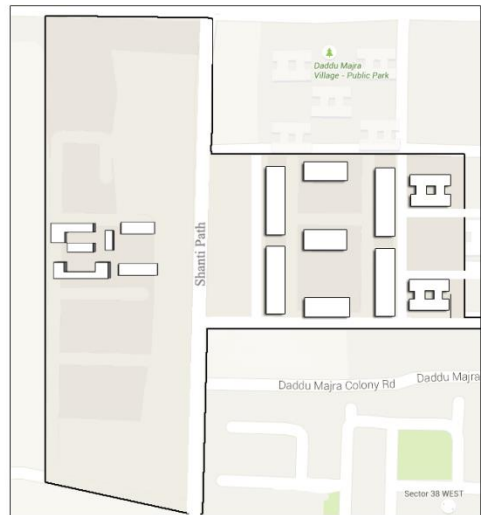
Housing Types and Configurations



Oriented towards the local wind to assure air flow



Density with smaller scale spaces and buildings



Existing Condition

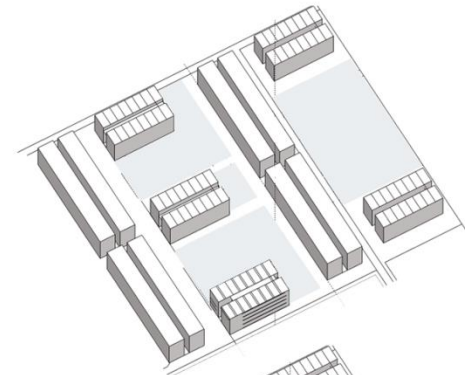


The Design Proposal

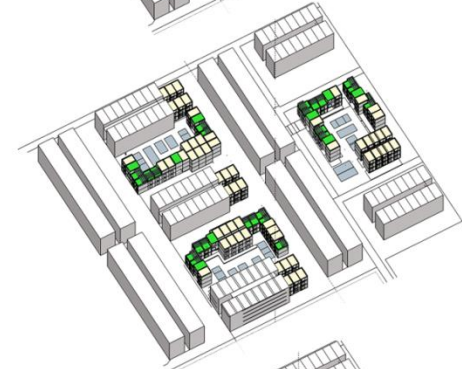


-  Existing Buildings
-  New Buildings

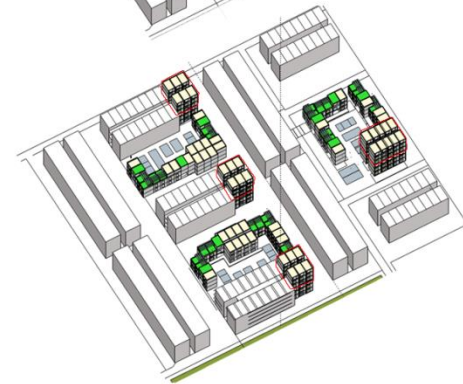
Top View of the Infill Part



Existing

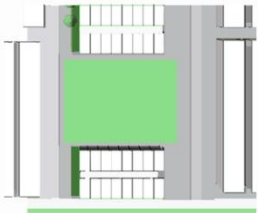
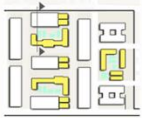


Phase -1-

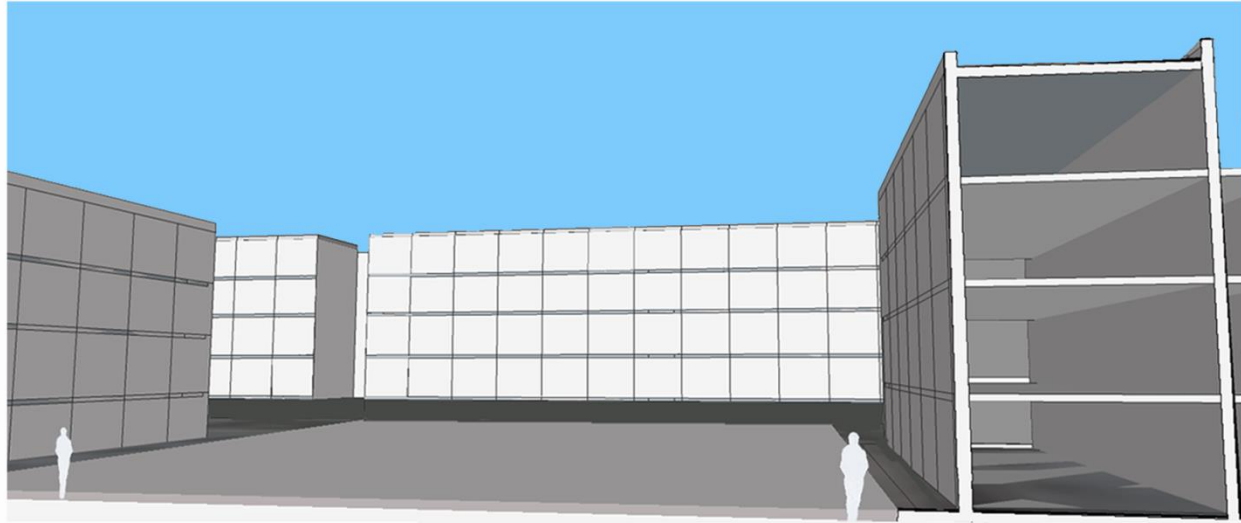


Phase -2-

**SMART DISTRIBUTION OF DENSITY
CAN TURN A REJECTED PLACE TO A VIBRANT URBAN**



The Current Situation



The Proposed Infill



Sensitive Infill Strategy for Daddu Majra, Chandigarh



Section in the semi public space
Colony Extension

Densification Strategy for Daddu Majra Colony, Chandigarh



Learn the art of digital painting