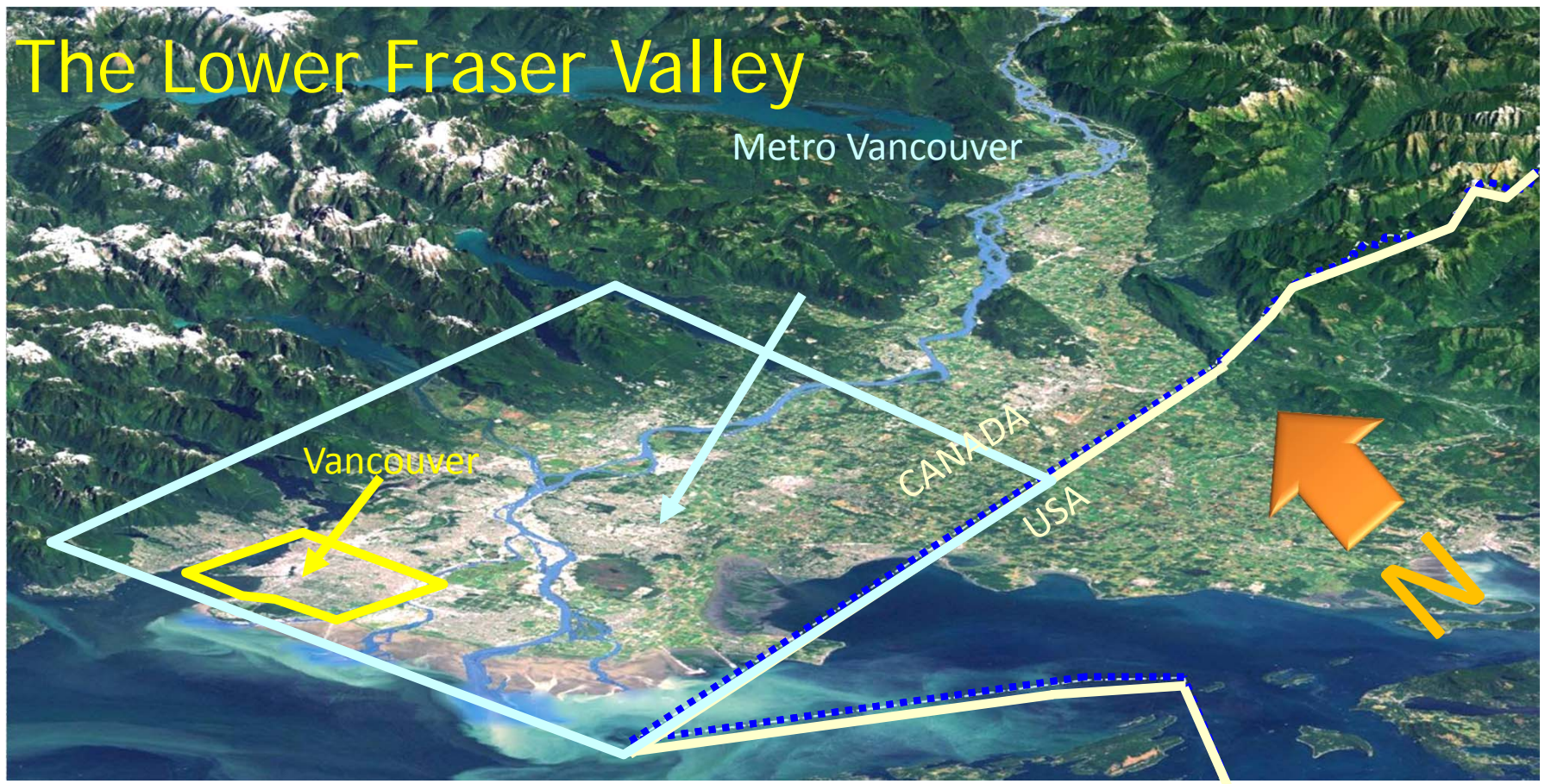


Vancouver's Waterfront Evolution: 1888 to Present

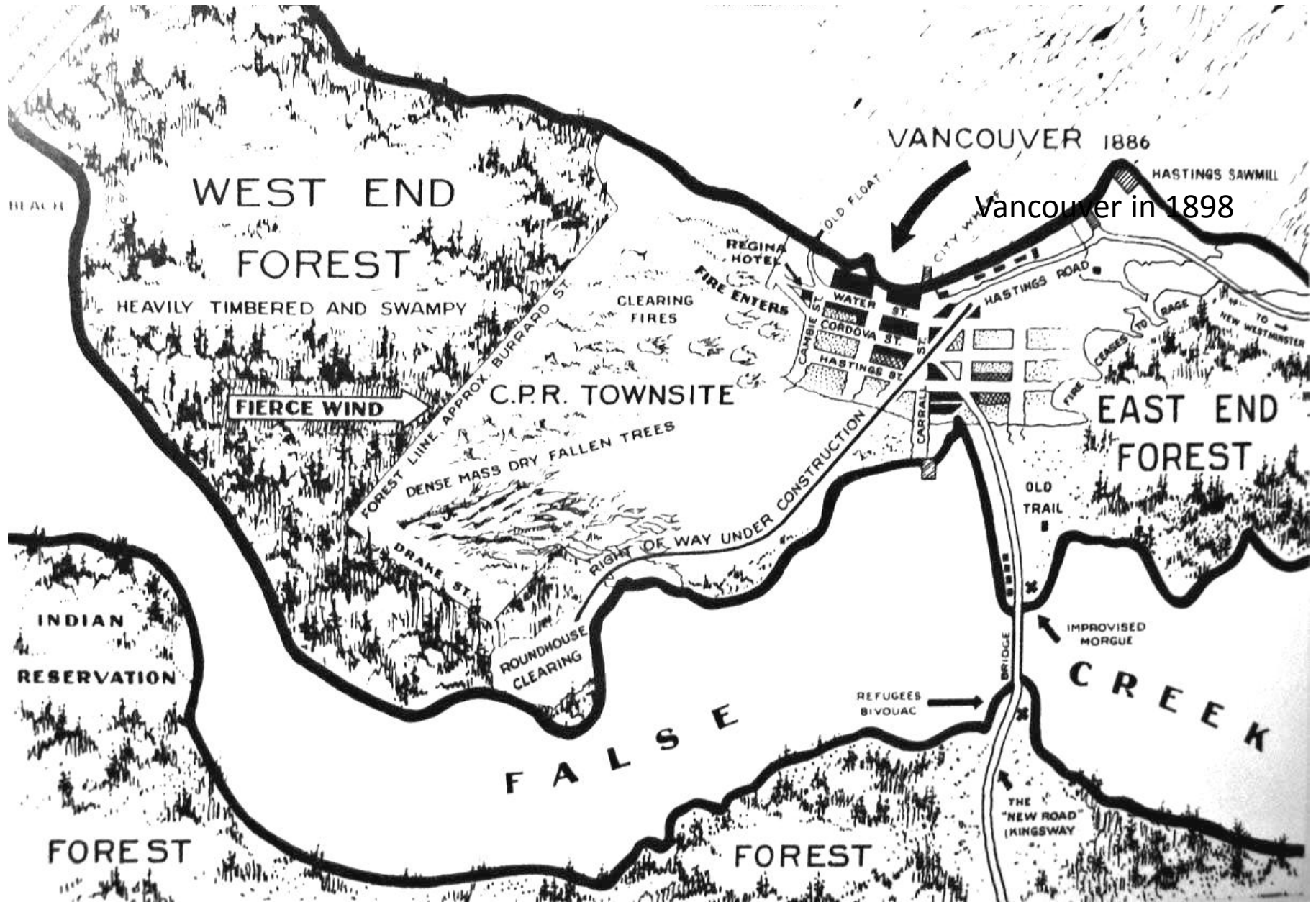


The Lower Fraser Valley



CONTEXT

VANCOUVER'S WATERFRONT EVOLUTION: 1888 to Present



Vancouver in 1898

Vancouver in 1886

VANCOUVER'S WATERFRONT EVOLUTION: 1888 to Present

Vancouver in 1898



Published by the Vancouver Map Printing and Publishing Company, Limited.
PANORAMIC VIEW OF THE
CITY OF VANCOUVER
BRITISH COLUMBIA
1898.

1. Burrard Inlet	2. False Creek	3. Upper False Creek Flats	4. Lower False Creek Flats
5. Burrard Peninsula	6. Burrard Inlet	7. Burrard Inlet	8. Burrard Inlet
9. Burrard Inlet	10. Burrard Inlet	11. Burrard Inlet	12. Burrard Inlet
13. Burrard Inlet	14. Burrard Inlet	15. Burrard Inlet	16. Burrard Inlet
17. Burrard Inlet	18. Burrard Inlet	19. Burrard Inlet	20. Burrard Inlet
21. Burrard Inlet	22. Burrard Inlet	23. Burrard Inlet	24. Burrard Inlet
25. Burrard Inlet	26. Burrard Inlet	27. Burrard Inlet	28. Burrard Inlet
29. Burrard Inlet	30. Burrard Inlet	31. Burrard Inlet	32. Burrard Inlet
33. Burrard Inlet	34. Burrard Inlet	35. Burrard Inlet	36. Burrard Inlet
37. Burrard Inlet	38. Burrard Inlet	39. Burrard Inlet	40. Burrard Inlet
41. Burrard Inlet	42. Burrard Inlet	43. Burrard Inlet	44. Burrard Inlet
45. Burrard Inlet	46. Burrard Inlet	47. Burrard Inlet	48. Burrard Inlet
49. Burrard Inlet	50. Burrard Inlet	51. Burrard Inlet	52. Burrard Inlet
53. Burrard Inlet	54. Burrard Inlet	55. Burrard Inlet	56. Burrard Inlet
57. Burrard Inlet	58. Burrard Inlet	59. Burrard Inlet	60. Burrard Inlet
61. Burrard Inlet	62. Burrard Inlet	63. Burrard Inlet	64. Burrard Inlet
65. Burrard Inlet	66. Burrard Inlet	67. Burrard Inlet	68. Burrard Inlet
69. Burrard Inlet	70. Burrard Inlet	71. Burrard Inlet	72. Burrard Inlet
73. Burrard Inlet	74. Burrard Inlet	75. Burrard Inlet	76. Burrard Inlet
77. Burrard Inlet	78. Burrard Inlet	79. Burrard Inlet	80. Burrard Inlet
81. Burrard Inlet	82. Burrard Inlet	83. Burrard Inlet	84. Burrard Inlet
85. Burrard Inlet	86. Burrard Inlet	87. Burrard Inlet	88. Burrard Inlet
89. Burrard Inlet	90. Burrard Inlet	91. Burrard Inlet	92. Burrard Inlet
93. Burrard Inlet	94. Burrard Inlet	95. Burrard Inlet	96. Burrard Inlet
97. Burrard Inlet	98. Burrard Inlet	99. Burrard Inlet	100. Burrard Inlet

101. Burrard Inlet	102. Burrard Inlet	103. Burrard Inlet	104. Burrard Inlet
105. Burrard Inlet	106. Burrard Inlet	107. Burrard Inlet	108. Burrard Inlet
109. Burrard Inlet	110. Burrard Inlet	111. Burrard Inlet	112. Burrard Inlet
113. Burrard Inlet	114. Burrard Inlet	115. Burrard Inlet	116. Burrard Inlet
117. Burrard Inlet	118. Burrard Inlet	119. Burrard Inlet	120. Burrard Inlet
121. Burrard Inlet	122. Burrard Inlet	123. Burrard Inlet	124. Burrard Inlet
125. Burrard Inlet	126. Burrard Inlet	127. Burrard Inlet	128. Burrard Inlet
129. Burrard Inlet	130. Burrard Inlet	131. Burrard Inlet	132. Burrard Inlet
133. Burrard Inlet	134. Burrard Inlet	135. Burrard Inlet	136. Burrard Inlet
137. Burrard Inlet	138. Burrard Inlet	139. Burrard Inlet	140. Burrard Inlet
141. Burrard Inlet	142. Burrard Inlet	143. Burrard Inlet	144. Burrard Inlet
145. Burrard Inlet	146. Burrard Inlet	147. Burrard Inlet	148. Burrard Inlet
149. Burrard Inlet	150. Burrard Inlet	151. Burrard Inlet	152. Burrard Inlet
153. Burrard Inlet	154. Burrard Inlet	155. Burrard Inlet	156. Burrard Inlet
157. Burrard Inlet	158. Burrard Inlet	159. Burrard Inlet	160. Burrard Inlet
161. Burrard Inlet	162. Burrard Inlet	163. Burrard Inlet	164. Burrard Inlet
165. Burrard Inlet	166. Burrard Inlet	167. Burrard Inlet	168. Burrard Inlet
169. Burrard Inlet	170. Burrard Inlet	171. Burrard Inlet	172. Burrard Inlet
173. Burrard Inlet	174. Burrard Inlet	175. Burrard Inlet	176. Burrard Inlet
177. Burrard Inlet	178. Burrard Inlet	179. Burrard Inlet	180. Burrard Inlet
181. Burrard Inlet	182. Burrard Inlet	183. Burrard Inlet	184. Burrard Inlet
185. Burrard Inlet	186. Burrard Inlet	187. Burrard Inlet	188. Burrard Inlet
189. Burrard Inlet	190. Burrard Inlet	191. Burrard Inlet	192. Burrard Inlet
193. Burrard Inlet	194. Burrard Inlet	195. Burrard Inlet	196. Burrard Inlet
197. Burrard Inlet	198. Burrard Inlet	199. Burrard Inlet	200. Burrard Inlet

REPRODUCED BY GASTOWN GALLERIES LTD. 1973

VANCOUVER'S WATERFRONT EVOLUTION: 1888 to Present





1979

1978



2003

2003



2011

2011

Then and Now

VANCOUVER'S WATERFRONT EVOLUTION: 1888 to Present





Overall View of the Vancouver Waterfront

- Where civic life occurs, 22k, peds and bicycles

VANCOUVER'S WATERFRONT EVOLUTION: 1888 to Present



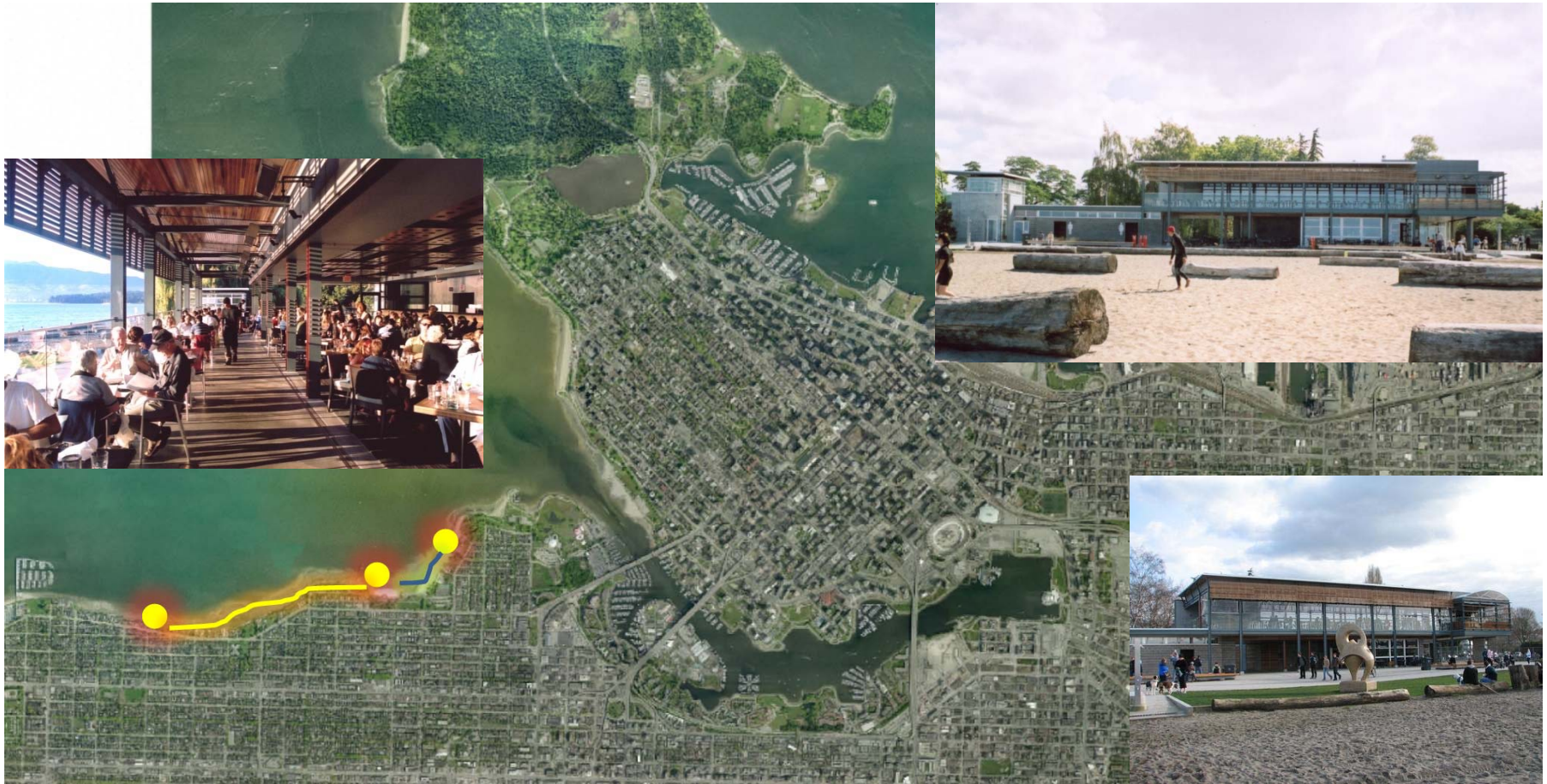
English Bay Seawall Extension (TBD)

- Additional 2.5 K west from Kits Pool, natural shoreline



Kitsilano Pool and Showboat 1960's

- Canada's Longest Pool @ 137 meters, 1000 swimmers



Kitsilano Beach Restaurant (2005)

- PPP, waterfront activation and new services



Vanier Park (1967)

- 17 Ha, Former RCMP Station, Waterfront Gateway to False Creek, Vancouver Museum, Maritime Museum, Vancouver Archives, Music School, Planetarium, Bard on the Beach, Children’s Festival.



Granville Island (1977)

- 38 Acres, 10.5 million people/year, Federal initiative, former Industrial area, public market, Emily Carr Art School, active concrete plant, boutique hotel, community centre, artists.



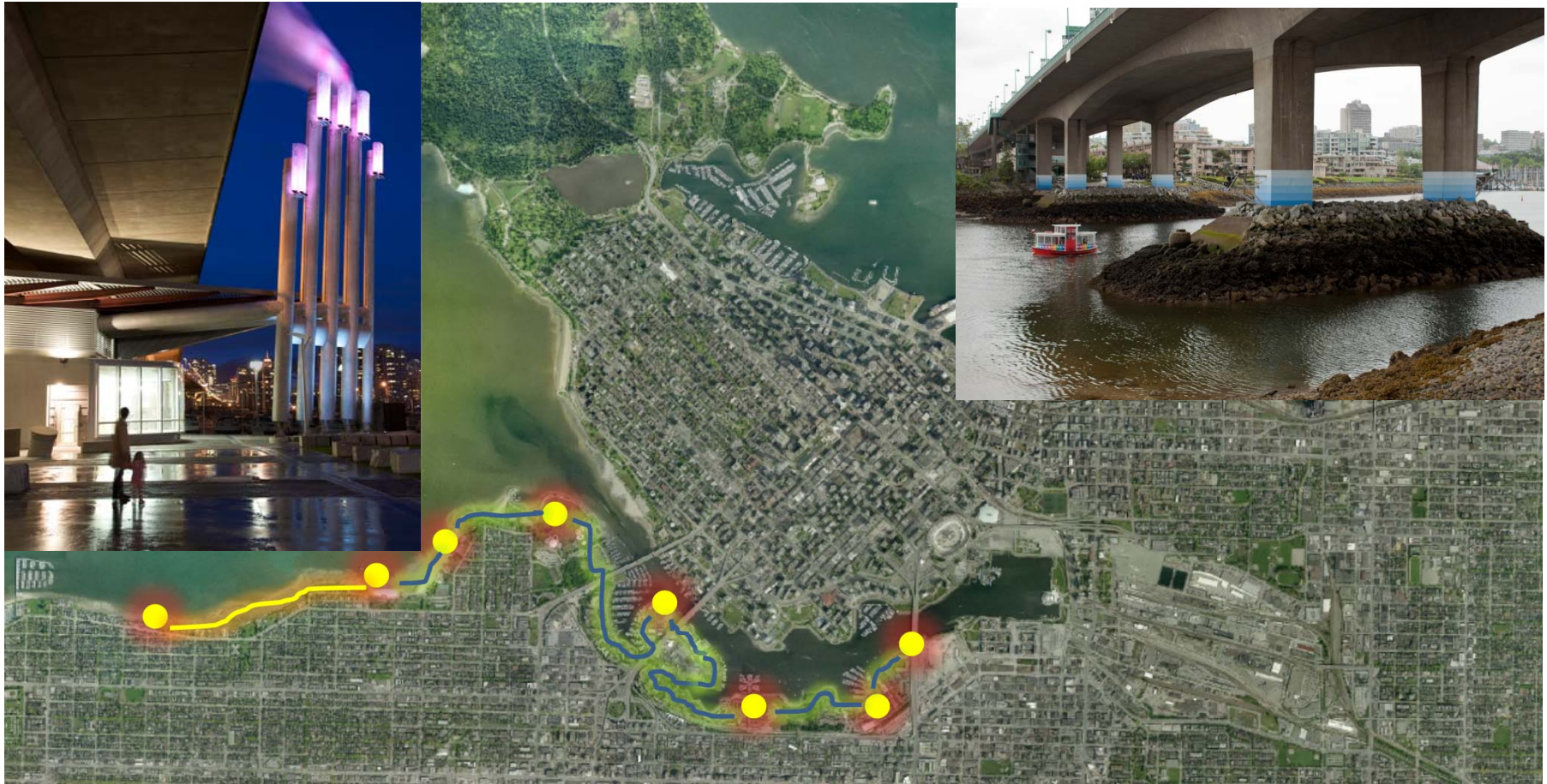
Charleson Park (1970's)

- 7.14 Ha. Off leach dog park and pastoral park experience including water features. Striking views of downtown skyline.



South False Creek (1972)

- Innovative public consultation, accessible waterfront/seawall, 40 units/acre of mixed tenure including coop housing, park and elementary school, start of Vancouverism.



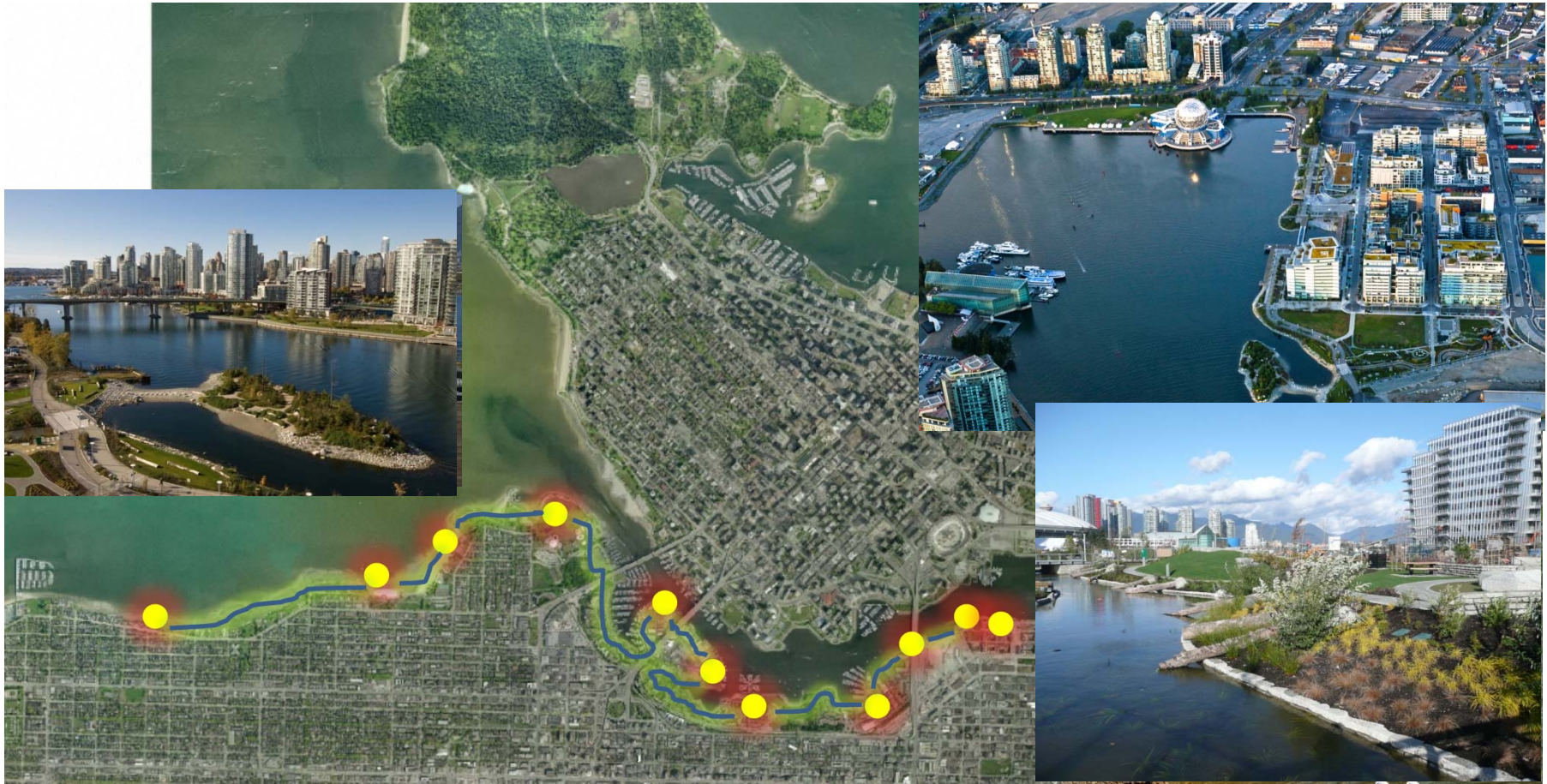
Neighbourhood District Energy Centre (2009)

- North America's only sewer heat recovery plant completed for the Olympic Games (not one cold shower over approximately 10,000 occurrences). Under bridge site required innovative architectural form and expression showcasing consumptive habits of residents on-line through expressive lighting feature.



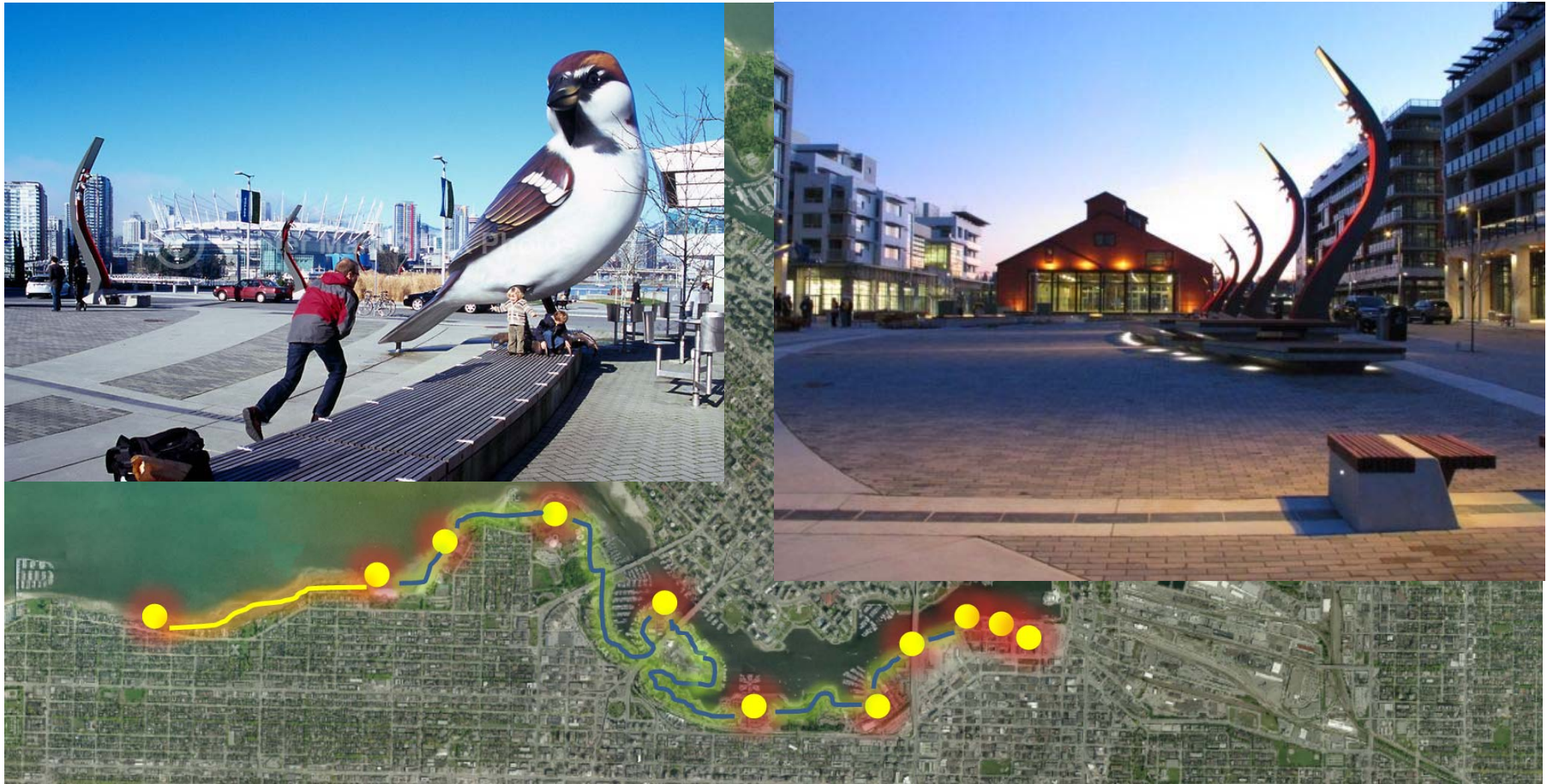
South East False Creek and Olympic Village (2009)

- First of 3 neighbourhoods totaling 10 - 12,000, 1400 units, 25 buildings, former brownfield, 15 years in 3, LivCom, LEED ND Platinum, legacy of public spaces and waterfront, NEU towards city wide district energy, habitat island and the grey whale.



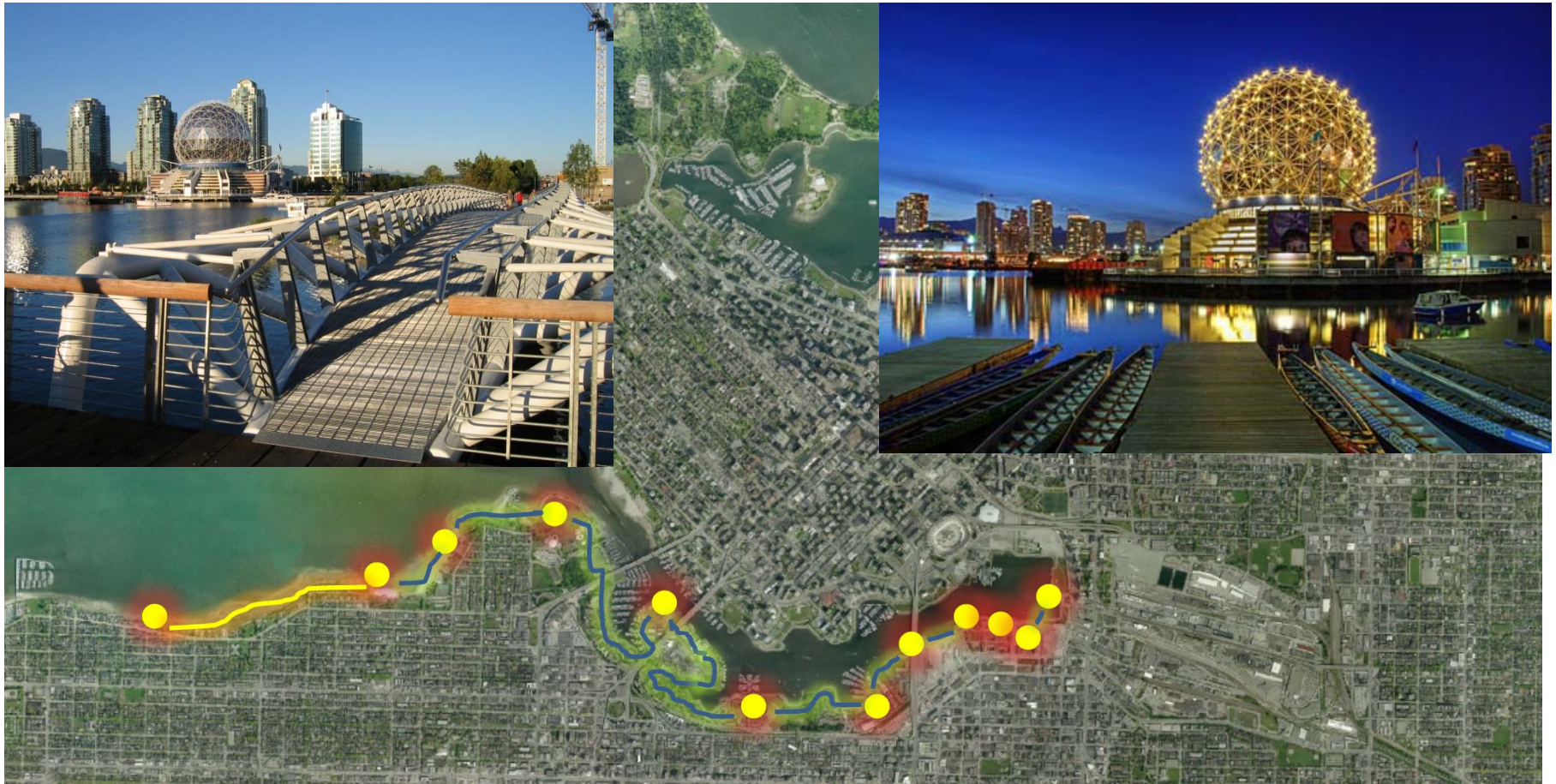
South East False Creek and Olympic Village (2009)

- First of 3 neighbourhoods totaling 10 - 12,000, 1400 units, 25 buildings, former brownfield, 15 years in 3, LivCom, LEED ND Platinum, legacy of public spaces and waterfront, NEU towards city wide district energy, habitat island and the grey whale.



South East False Creek and Olympic Village (2009)

- First of 3 neighbourhoods totaling 10 - 12,000, 1400 units, 25 buildings, former brownfield, 15 years in 3, LivCom, LEED ND Platinum, legacy of public spaces and waterfront, NEU towards city wide district energy, habitat island and the grey whale.



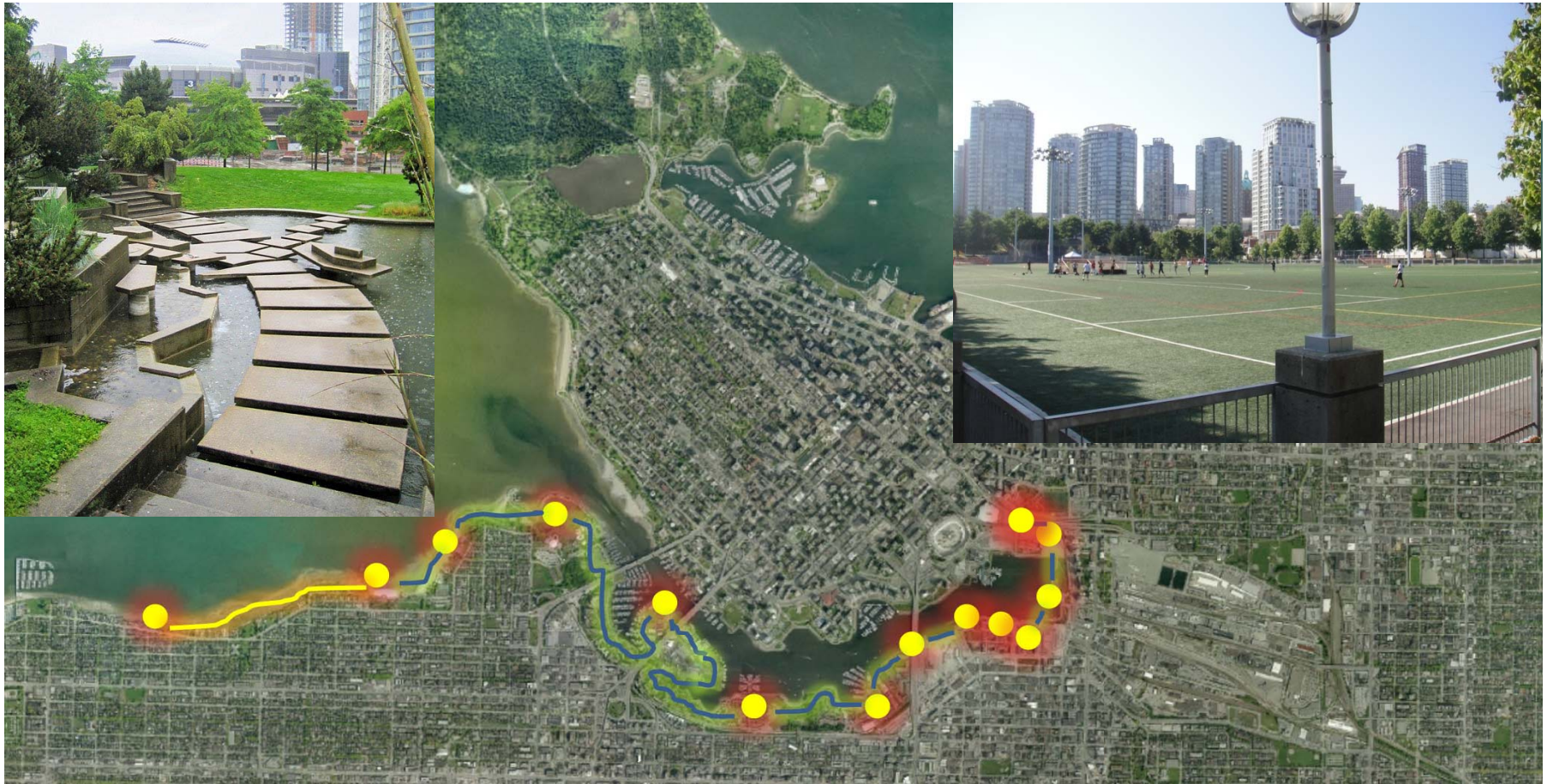
Science World (1977/1986)

- Icon on the creek, former Expo '86 Visitors Centre, 600,000 visitors/year to increase with outdoor interactive park



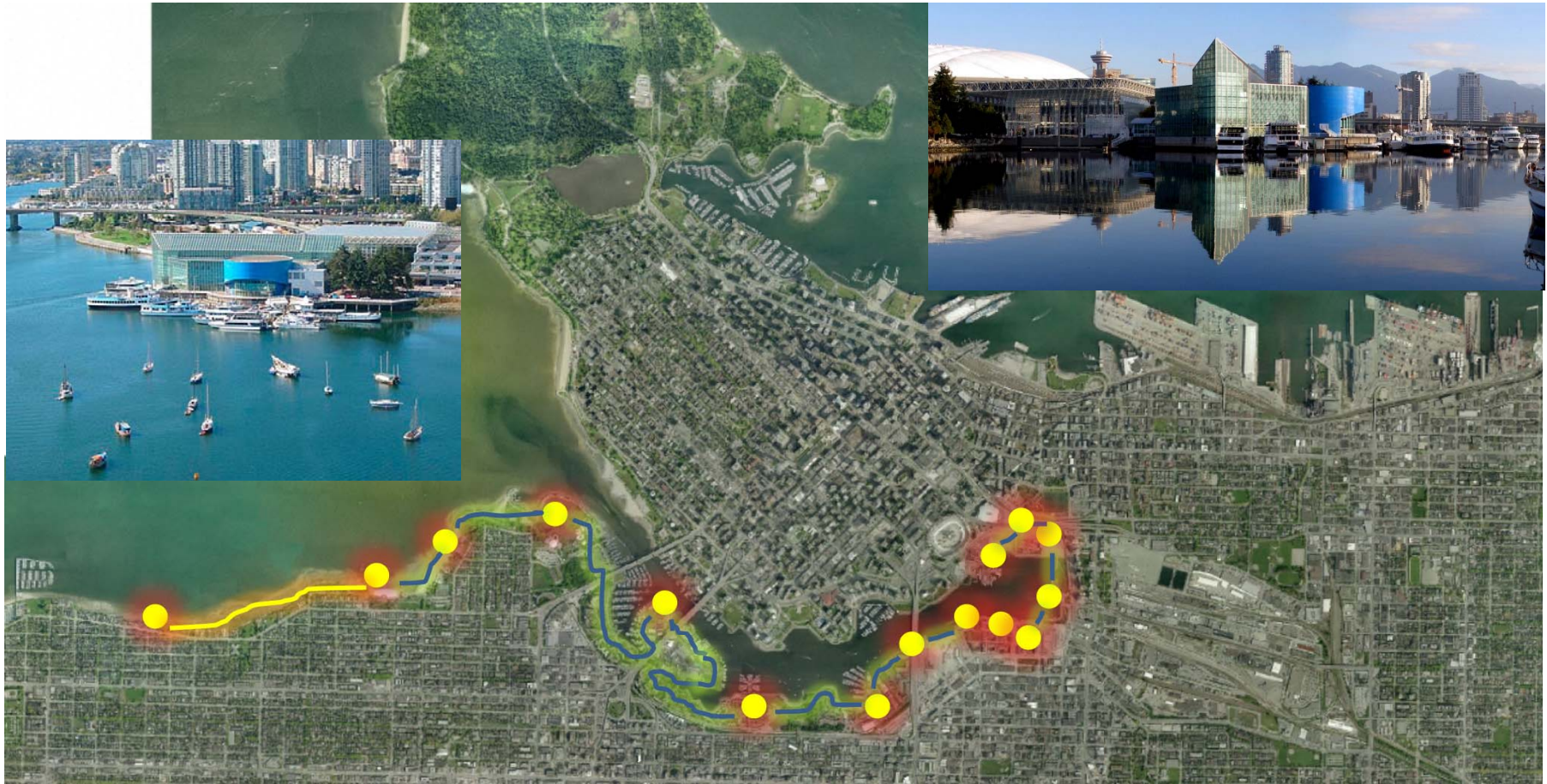
Viaducts Removal/False Creek Commons (TBD)

- Last remnant of freeways idea towards Vancouverism, will stitch False Creek waterfront back to historic precincts of Gastown and Chinatown, inner city beach, potential institutional facilities including art museum and aquatic centre



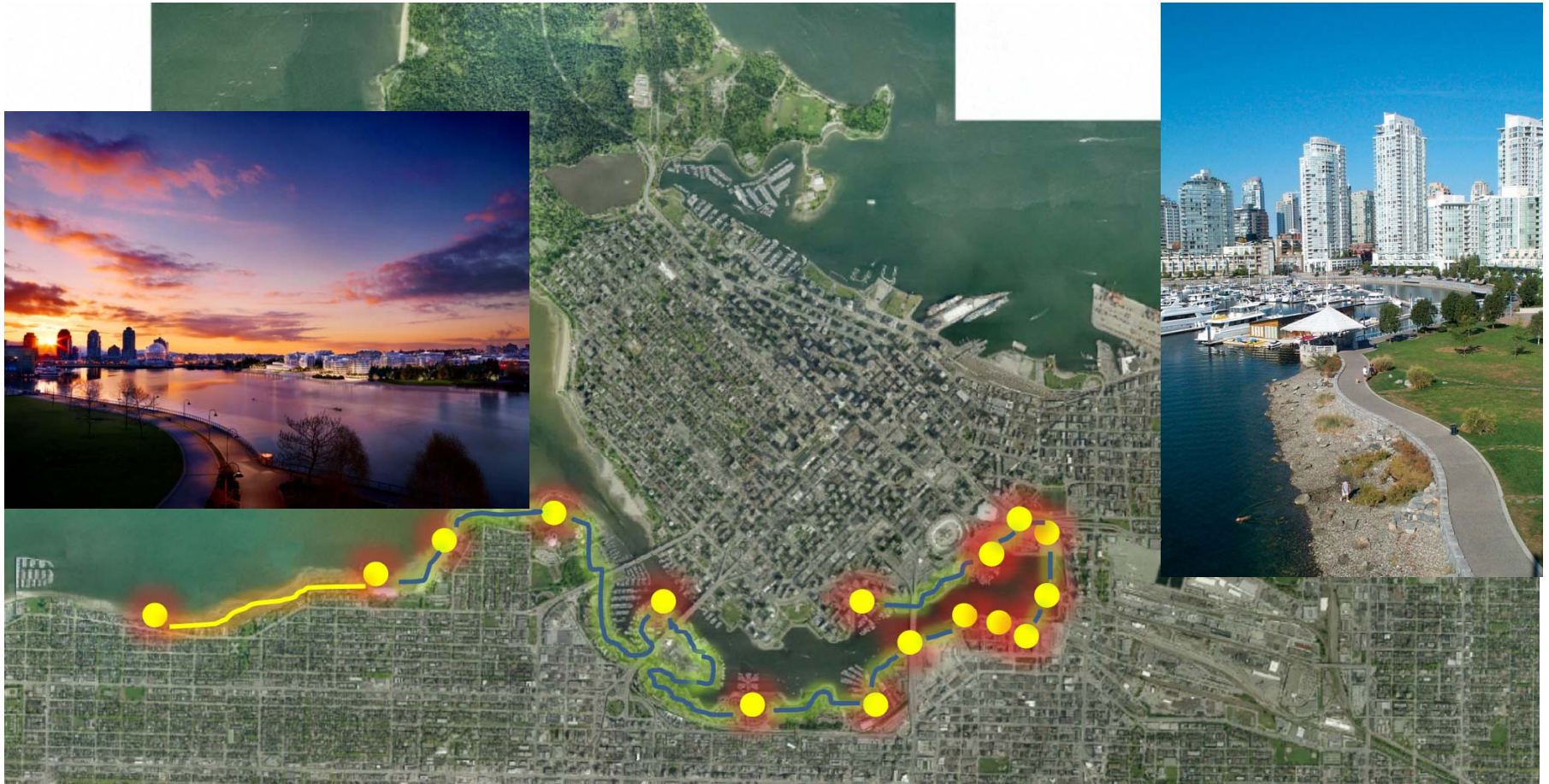
Andy Livingston Park (1995)

- 4.21 Ha waterfront park, paid for by Community Amenity Contributions from the developer, lighted fields not in proximity to residential uses, downtown urban location for team sports and skateboarding



North East False Creek (2012)

- Last neighbourhood developed on former Expo '86 site, high density multi-tower residential and office mix along with civic sports/recreational assets, large waterfront plaza anticipated



Concord Lands (1988 - present)

- 100Ha, 14,000 people on former Expo '86 Lands. A planning initiative in partnership with industry to deliver complete/balanced waterfront communities including locally serving, ground oriented, commercial services and amenities
- 20% non-market housing, daycares, elementary school and parks. Tower/podium form provides for optimal open space opportunity in a compact urban core.

VANCOUVER'S WATERFRONT EVOLUTION: 1888 to Present



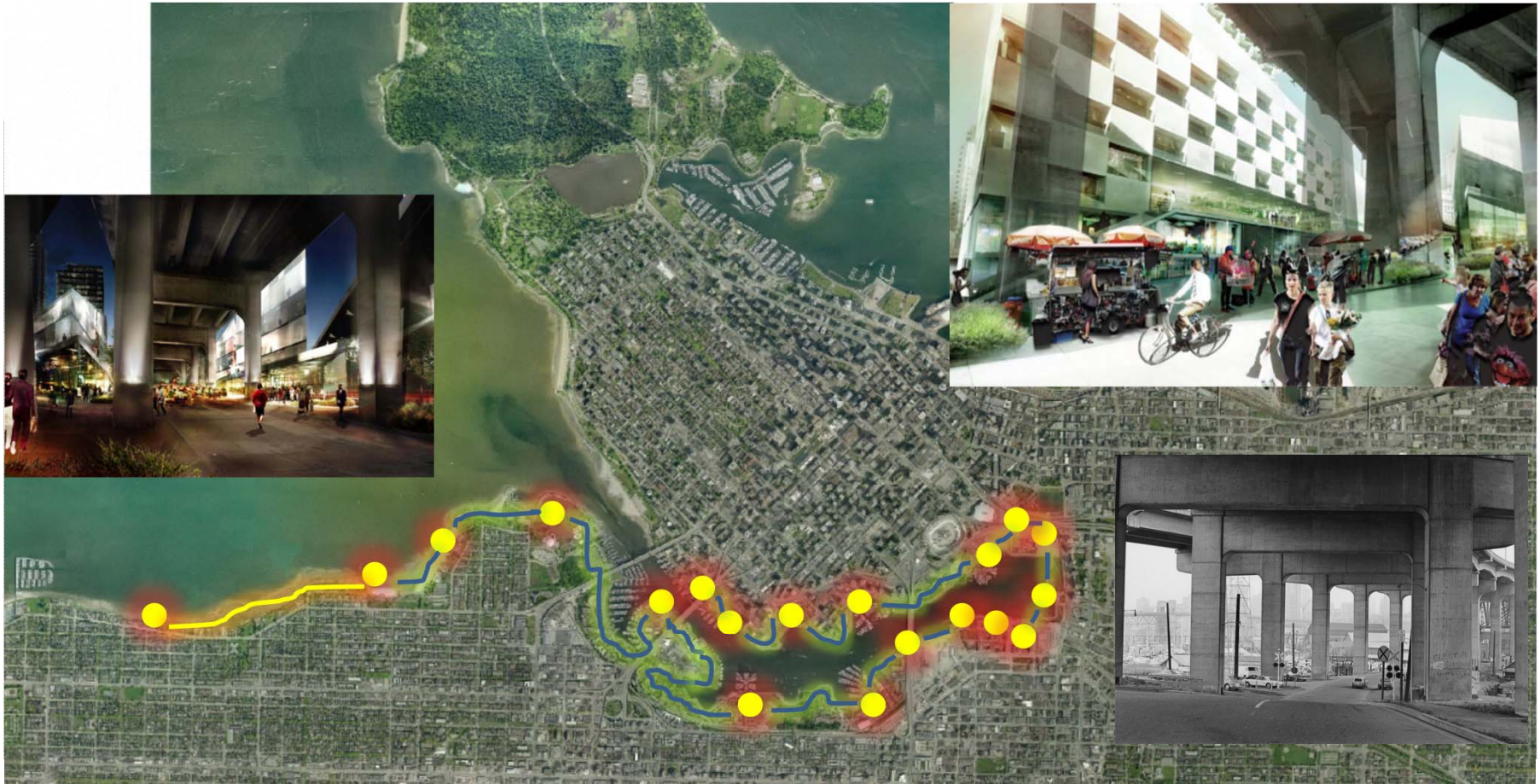
David Lam Park (1995)

- 4.34 Ha waterfront park, mix of active and passive recreation opportunities, all with views of False Creek and Yaletown. Sports courts and playgrounds, and a large open lawn.



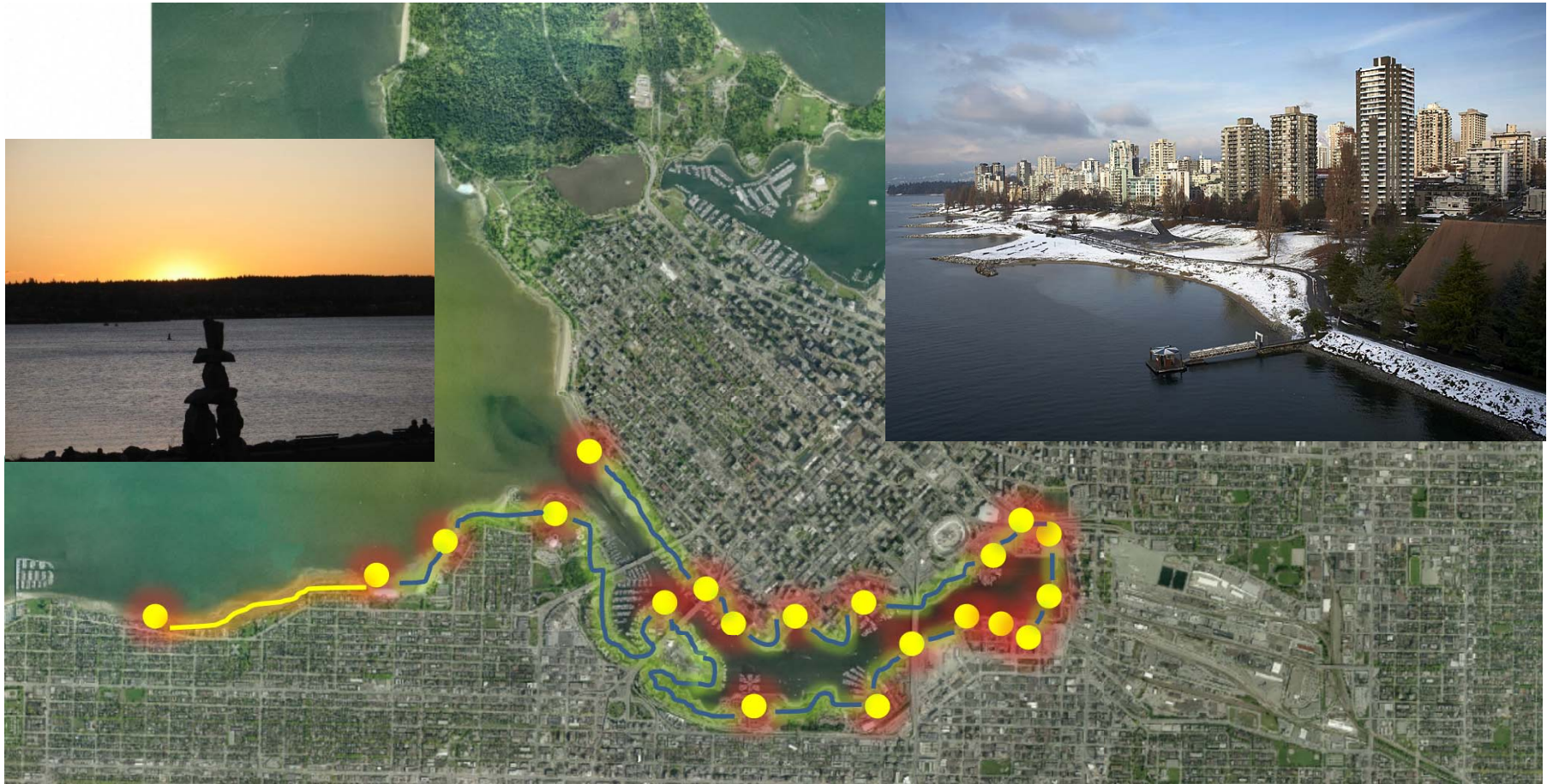
George Wainborn Park (1995)

- 2.5 Ha waterfront park, formal and informal spaces, expansive lawns, a dramatic water feature and spectacular views of False Creek and the city.



Under Granville Bridge Neighbourhood Centre (TBD)

- Future location of new, locally serving neighbourhood centre offering a range of local services including food market and drug store. Unique under bridge environment with focus on innovative urban lighting, weather protected promenade to False Creek and seawall/waterfront, potential for co-location of new cultural facilities.



Sunset Beach

- Entry to False Creek, Aquatic Centre, quiet, pastoral, no amplified sound



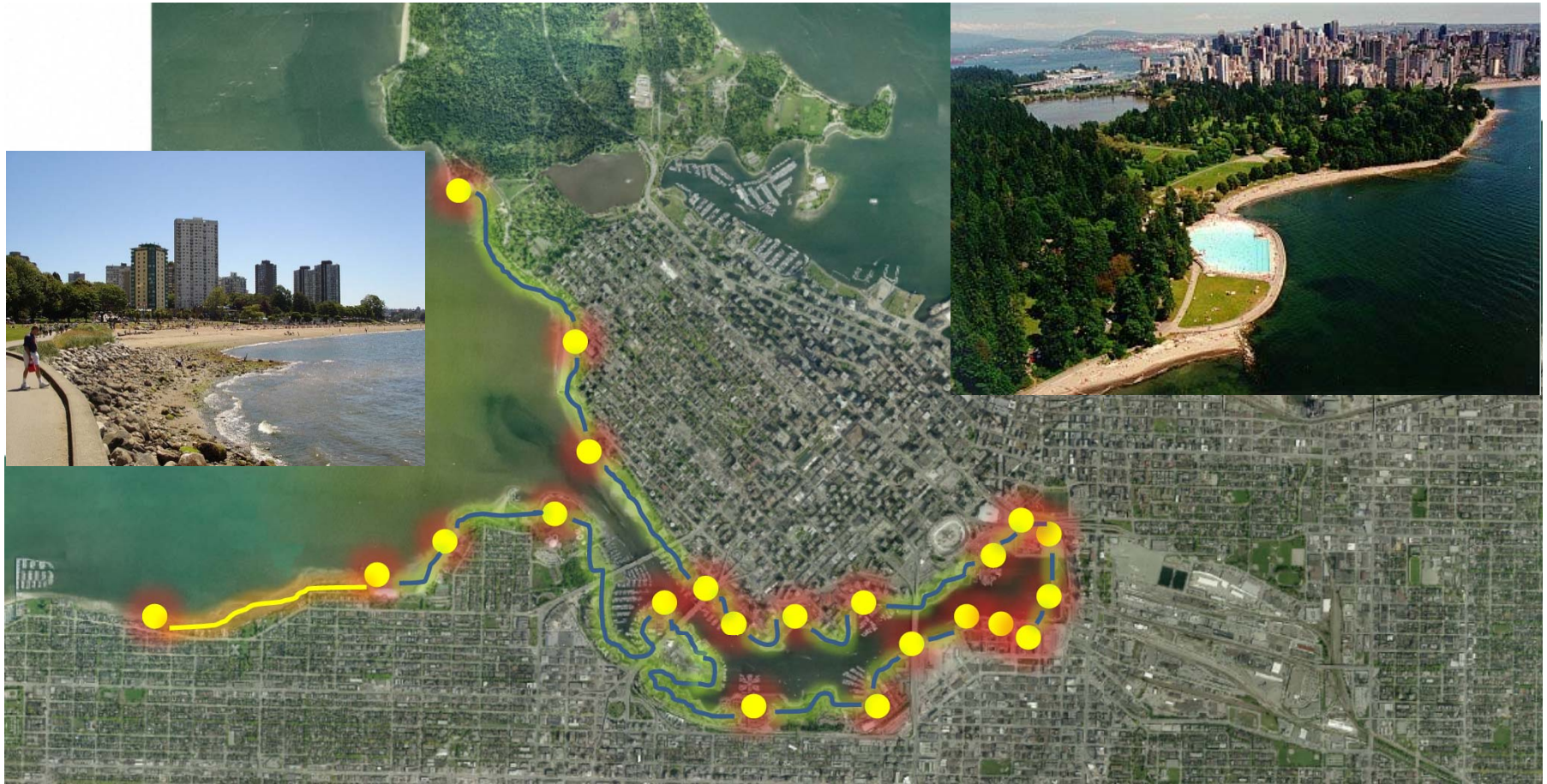
English Bay Beach

- AKA First Beach, most active, urban in DD, Celebration of Fire, Prominent location for Vancouver Sculpture Biennale



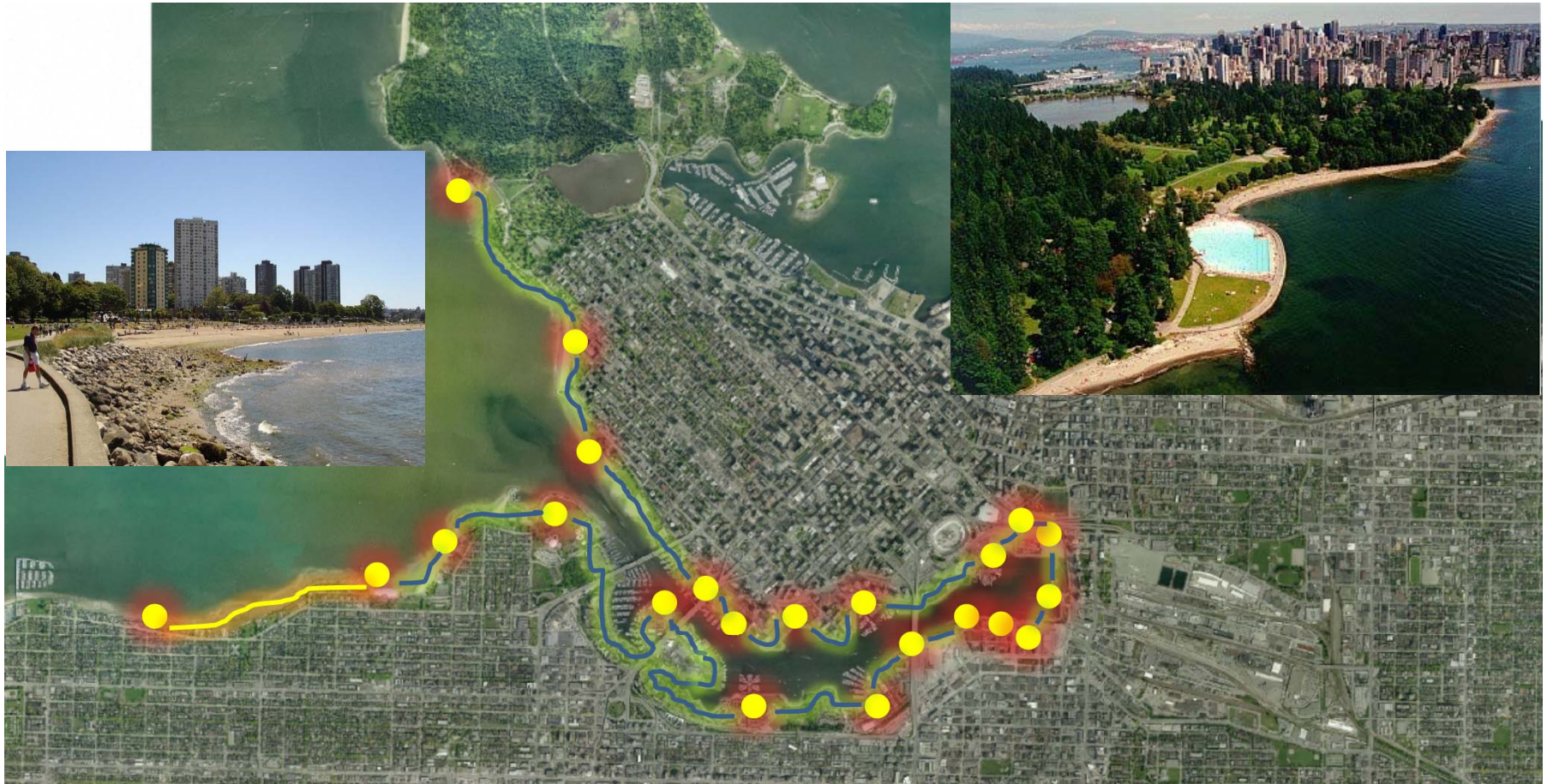
English Bay Beach House

- PPP, careful integration with historic structure



Second Beach

- Waterfront pool, related family oriented park activities, restaurant, lawn bowling, 3 par golf, habitat



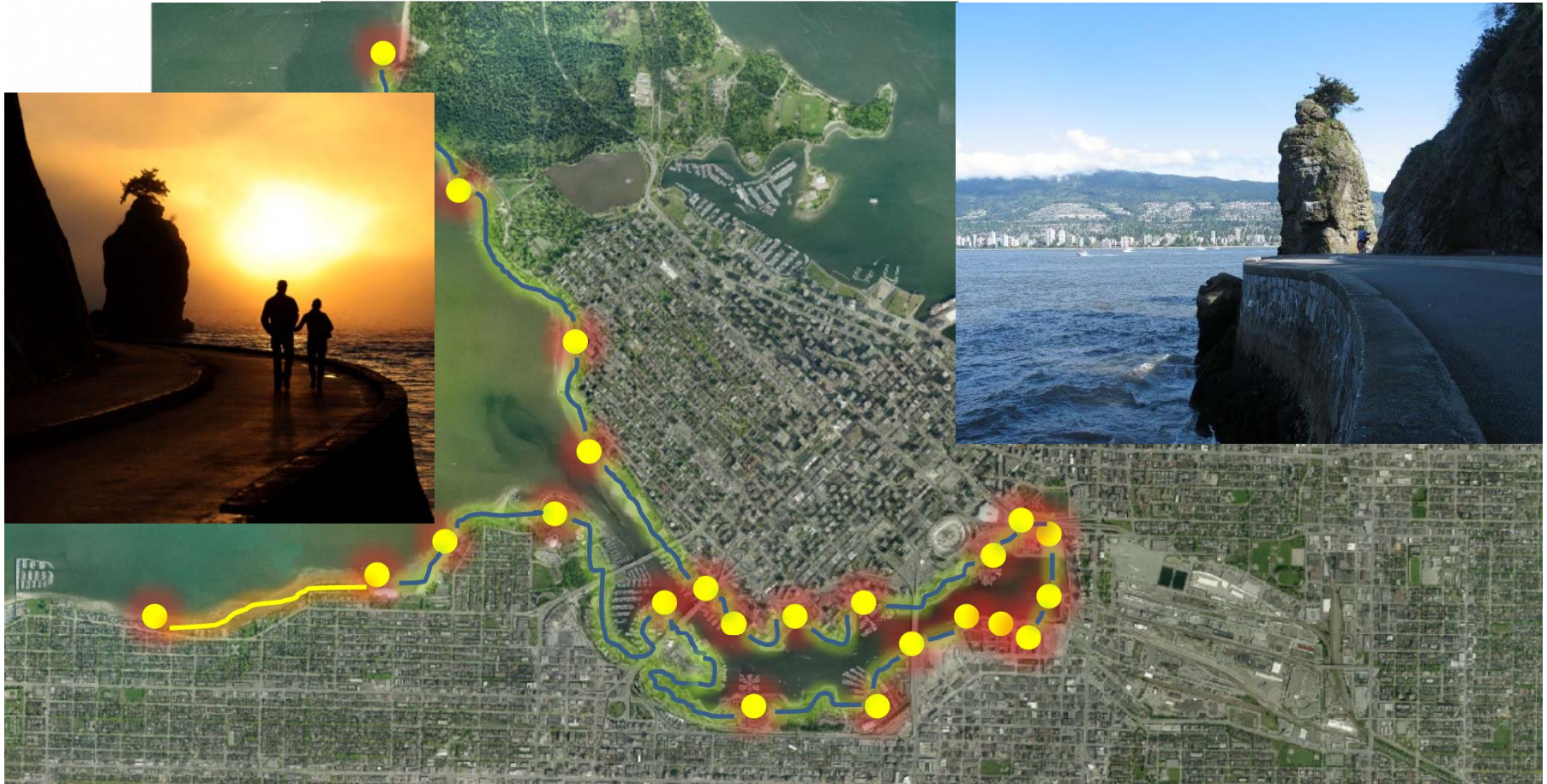
Second Beach Pool

- Original tidal filled concrete pool location, heated/fresh water, 80m length, family oriented, more waterfront pool locations under consideration



Third Beach

- Reclusive, pastoral with park backdrop, tidal experiences for children



Seawall Places – Siwash Rock

- A dramatic pedestrian and cycling experience is enjoyed by Seawall users who are presented with expansive ocean views and spray from tidal fluctuations. Unique landmark stone feature with long standing vegetation distinguishes the site.



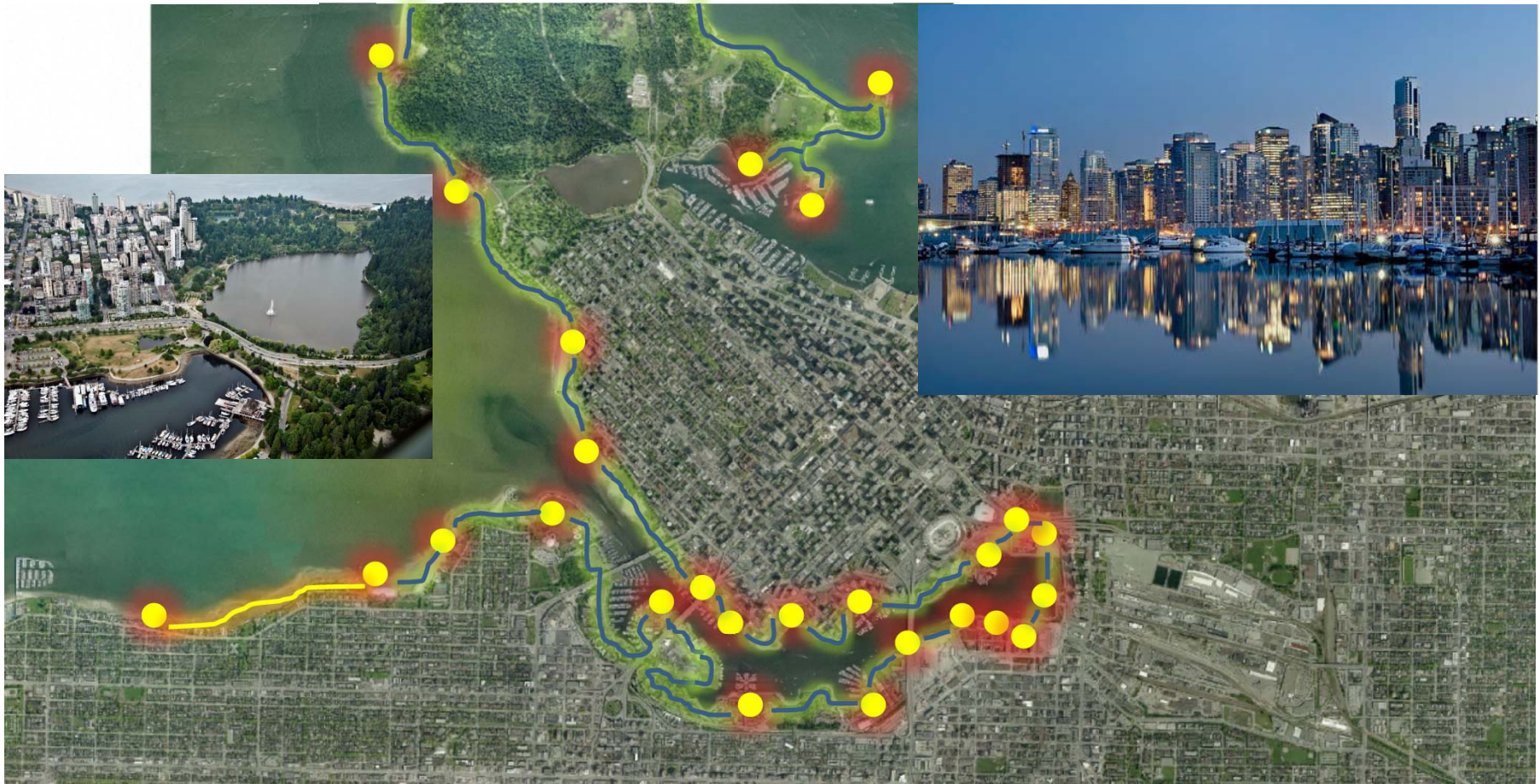
Seawall Places – Brockton Point

- Location of a prominent automated lighthouse at the entry to the Burrard Inlet from English Bay. The location provides an excellent panoramic view of the city's waterfront industrial context and active inner harbour.



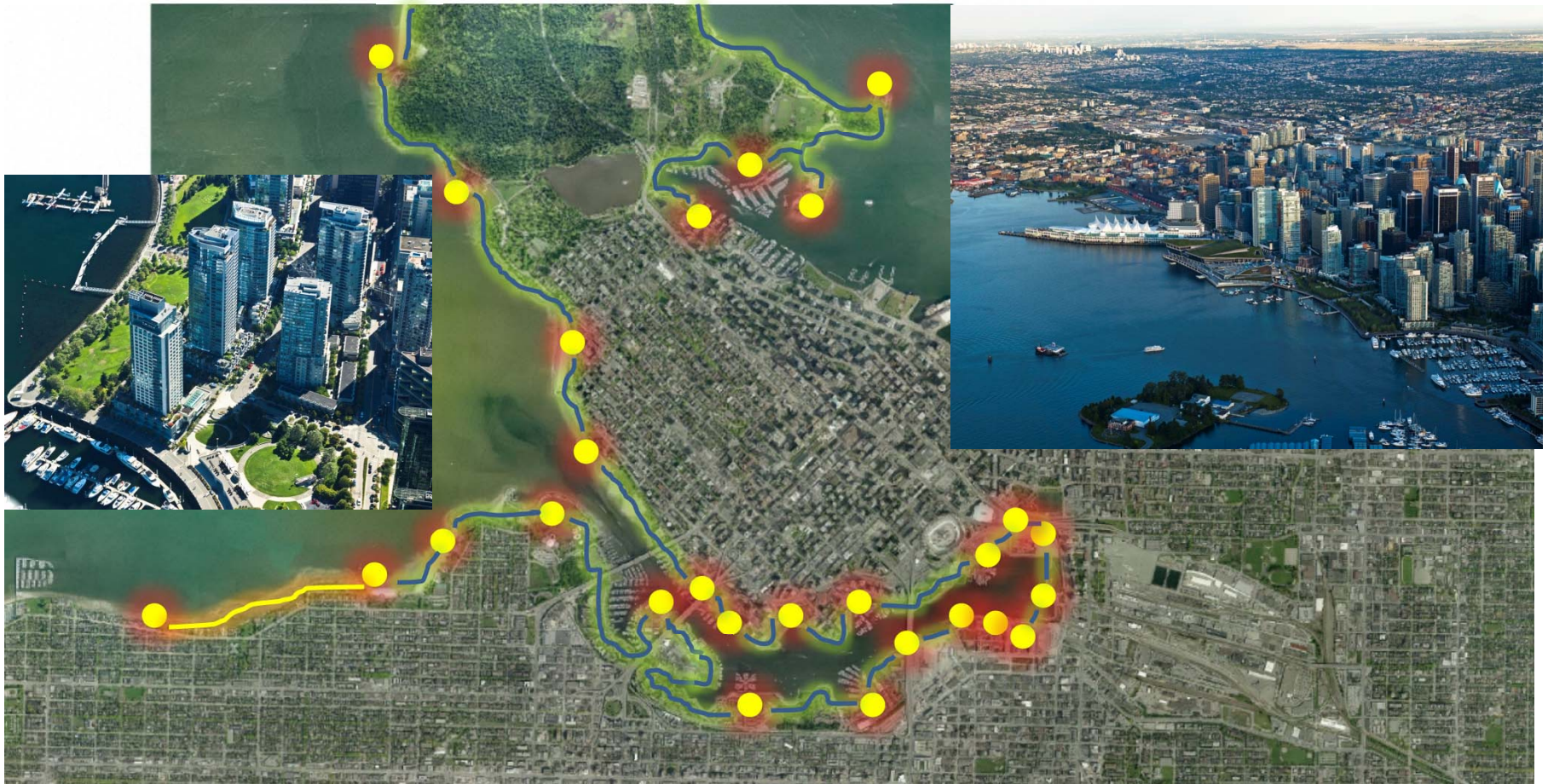
Seawall Places – Deadmans Island

- A distinctive, small (3.8 Ha), well treed island strategically located for inner harbor surveillance and security by Vancouver's Naval Reserve Division. The island is accessible at low tide and originally accommodated housing for early settlers/squatters in the early 20th century.



Seawall Places – City Views

- Dramatic city views, day and night, greet pedestrians and cyclists from this easterly Seawall frontage. Places to pause, and reflect, are integrated into the public realm experience.



Coal Harbour (1990)

- 28 Ha, 4,100 people. Central waterfront's newest neighbourhood on former railyards. A series of well designed tower podium developments, implemented over a brief 15 year build-out period, have completed the downtown's northerly urban edge with related Community Amenity Contributions attributed to waterfront development, parks and a community centre.

VANCOUVER'S WATERFRONT EVOLUTION: 1888 to Present



Coal Harbour Community Centre (2000)

- A thoughtful, well integrated urban community centre at 85,000 Square feet with rooftop park and active waterfront uses that provides recreational services for new residents. The architectural expression is reflective of the maritime.



Vancouver Trade and Convention Centre (2009)

- Completed for the 2010 Olympics as the Media Centre, largest green roof in North America, building form carefully integrates with waterfront experience and urban fabric from distant views, continuous seawall and float plane access on north (Burrard Inlet) frontage, location of large urban plaza (Jack Poole) and permanent home of Olympic Caldron



Portside Park/CRAB Beach

- 3.31 Ha, scenic northshore views active port context, serves Downtown Eastside community



Future Waterfront/Pedestrian Network Work Opportunities For DTES/False Creek Flats

- Active planning work underway



THANK YOU!
VANCOUVER'S WATERFRONT EVOLUTION: 1888 to Present

